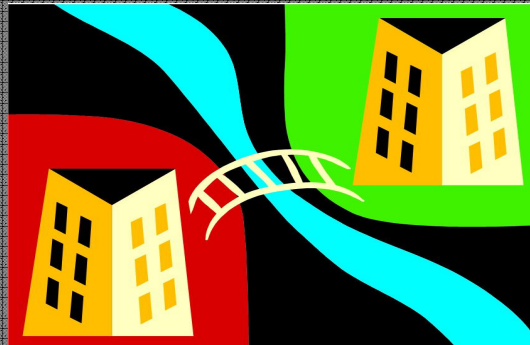


**BRIDGES TO HOUSING EVALUATION  
2008 YEAR-END REPORT**

---



---

**REGIONAL RESEARCH INSTITUTE  
PORTLAND STATE UNIVERSITY**



# BRIDGES TO HOUSING EVALUATION

## 2008 YEAR-END REPORT

### **Bridges to Housing Evaluation Team**

Diane K. Yatchmenoff, Ph.D., Principal Investigator  
Kimberly Ford, M.U.R.P., Project Manager  
Robin Walker-Phillips, Interviewer  
Aimee Bellmore, L.C.S.W., Graduate Research Assistant  
Sara Jade Webb, M.S., Data Analyst

### **Contact Information**

Diane K. Yatchmenoff  
Phone: 503-725-4158  
Fax: 503-725-4180  
Email: [yatchmd@pdx.edu](mailto:yatchmd@pdx.edu)  
Web: [www.rri.pdx.edu](http://www.rri.pdx.edu)

The *Bridges to Housing Evaluation: 2008 Year-End Report* was published March of 2009 by the Regional Research Institute for Human Services, Portland State University, Portland, Oregon.

---



**BRIDGES TO HOUSING EVALUATION  
2008 YEAR-END REPORT**

**CONTENTS**

EXECUTIVE SUMMARY .....i

I. BACKGROUND..... 1

    Evaluation Methods..... 2

II. OVERVIEW OF ENROLLED FAMILIES ..... 5

    Race and Ethnicity ..... 5

    Family Needs and Prior Resource Use..... 6

    Special Needs/Disabilities..... 6

    Housing History..... 7

III. BUILDING ON EARLY SUCCESS: OUTCOMES AT 12 MONTHS ..... 9

    Housing Stability ..... 9

    Safety and Family Stability..... 10

    Health Behaviors..... 11

    Income and Employment ..... 12

    Child Wellbeing..... 15

    Summary of Outcomes..... 18

IV. RELATIVE EFFECTIVENESS OF BRIDGES TO HOUSING: THE  
    COMPARISON GROUP ..... 19

V. FAMILY STORY.....21

VI. PROGRAM RETENTION AND EARLY EXITS.....27

    Retention Rates.....27

    Reasons for Exits .....27

    Family Needs and Likelihood of Retention.....28

    Program Factors .....30

VII. THE IMPLEMENTATION OF BRIDGES TO HOUSING.....33

    Housing Sites .....33

    Case Management Service Delivery .....34

VIII. DISCUSSION .....47

APPENDIX.....49

    Bridges to Housing Program Referral Form: High Resource User Screening  
    Tool.....51

    Bridges to Housing 12-Month Interview Protocol.....53

    Comparison Group Informed Consent Document.....55

    Comparison Group Data Collection Protocol .....57

    Site Visit Protocol .....67

    Housing Site Information by County .....73

## **BRIDGES TO HOUSING EVALUATION 2008 YEAR-END REPORT**

### **EXECUTIVE SUMMARY**

#### **Background**

Bridges to Housing (B2H) is a regional initiative aimed at moving high need homeless families out of the cycle of homelessness by providing permanent affordable housing and intensive case management services that build on the strengths of family members. Clark County in Washington State and Multnomah, Washington, and Clackamas Counties in Oregon joined together (along with cities and Public Housing Authorities) to develop Bridges to Housing. In addition to supporting families in their efforts to obtain permanent housing and progress towards self-sustainability, Bridges to Housing is developing regional solutions to family homelessness. At the coordinating and governance levels, B2H focuses on stimulating policy changes and the re-alignment of public resources and needed systems.

The first Bridges to Housing families were enrolled and housed in October of 2006 in Clark County. The project has rolled out gradually across the jurisdictions as housing and resources for case management have become available. Nearly 200 families have been enrolled in B2H to date.

The evaluation of Bridges to Housing includes a longitudinal outcome study of children and families served by B2H, following them from the time of enrollment for up to two years; a process study focusing on the implementation of B2H and the experience of providers and families; and a comparison group study of the impact and relative effectiveness of B2H in improving outcomes for high need families and their children. This report focuses on outcomes for families enrolled in B2H for 12 months, program retention, and the implementation of B2H across jurisdictions and providers.

Findings are drawn from baseline data on 162 B2H families and 12-month follow-up data on 44 families submitted through the Homeless Management Information System (HMIS) as of mid-November. Quantitative data are supplemented by information gathered through site visits, interviews with case managers, discussions with the Service Provider Workgroup<sup>1</sup>, and interviews with B2H heads of households.

---

<sup>1</sup> The Service Provider Workgroup is attended by B2H case managers and supervisors and meets on a monthly basis as a forum for training and ongoing peer support.

## 12-Month Outcomes for B2H Families

Overall, the 12-month findings are consistent with the positive outcomes found at the end of the first six months, suggesting continued stability for families as well as modest gains in some areas. We also see reflected in the data the challenge of helping these high need families achieve self-sufficiency within a relatively short time frame, given the many barriers they encounter.

- **Stability in housing.** Among the 44 families with baseline, six-month and 12-month data, only three families moved during the second six months of the program (two moved to different apartments within B2H; one went to a substance abuse treatment facility). This is in contrast to an average of two moves per family in the six months prior to enrollment, when nearly half of the families moved at least twice and many moved more often than that.
- **Family safety and stability.** The 12-month data are similar to the findings at six months in that families are less likely to have experienced domestic violence or child protective service concerns than when they were homeless. Three families reported an incident of domestic violence that occurred between six and 12 months after enrollment (7% of families) versus 18 families (44%) who reported domestic violence for the six months prior to enrollment. One family had a child removed and placed in foster care in contrast to seven families who experienced child removal in the period just prior to enrollment.
- **Income and employment.** B2H families continued to make modest gains in employment and employment readiness. Employment rates improved from 20% (n=8) at intake to 34% (n=14) at 12 months with corresponding average hourly wage increase from \$8.30 to \$9.10. Furthermore, by 12 months 41% of all B2H heads of households were either enrolled in a job search or job training program **or** a school or degree program, or both. Significant challenges to employment remain for many families, however.
- **Child wellbeing.** The experience of children in B2H is markedly different from what it was in the period prior to their families' enrollment in the program. Both at six months and 12 months, not only have children stopped moving from place to place, they are also safer from exposure to violence, safer from inappropriate or inadequate parenting, and less likely to be removed from their families and placed in out-of-home care. Some families have received substantial help to address behavioral, mental health, and educational challenges for their children as well as enriched opportunities for social and emotional growth.
- **Stability and success in childcare and education settings.** The number of children who had attended two or more childcare/education settings in a six month period decreased from 35% at baseline to 10% at 12-months. Moreover, at the time of enrollment just over a third (n=14) of the focus children were meeting grade benchmarks. By 12 months, more than half of these children were performing at grade level (n=21). In addition, more parents were aware of how

their children were doing (49% at 12 months versus 18% at baseline could say whether or not their children were meeting benchmarks).

- **High cost health care services.** Health behaviors were unchanged across the three time points, with 40-50% of the families utilizing Urgent Care or Emergency Rooms for illness, acute conditions, or injury for adults or children. Discussion with providers and families clarified the underlying issue as a consistent lack of access to same-day or same-week appointments with primary Oregon Health Plan (OHP) providers, even when there are emergent needs for treatment.

### **Program Retention and Early Exits from B2H**

The overall retention rate for B2H has been reasonably high within the first six months of services (88% of families stayed in place) and moderate within the first 12 months of service (64% of families remained in their B2H placement). A number of families also exited between 12 and 19 months after enrollment, bringing the total of early exits to 34 families out of the 117 enrolled prior to April 2008.<sup>2</sup>

About a third of the early exits were voluntary and designated ‘positive’ (families had progressed, were ready to move on, and/or had found other housing opportunities). However, roughly 65% of the premature exits (22 families) were designated as ‘negative,’ signifying eviction or termination from B2H as a result of non-payment of rent, criminal activity, other lease infractions, or conflicts with the program. Among these families, 77% had listed mental illness as a special need at the time of enrollment, contrasting with a lower prevalence of mental health among families that remained in B2H or left voluntarily. These families on average were also higher resource users than other B2H families, and may have needed a different or higher level of service than B2H provides in order to be successful in housing.

### **The Implementation of B2H**

In the fall of 2008, the PSU evaluation team joined Neighborhood Partnership Fund (NPF) staff in a series of visits to the B2H providers in each of the four counties. The purpose of these visits was to update information about B2H housing sites as well as to review the implementation of the B2H service model.

Briefly, site visits confirmed that B2H is rolling out across a wide range of housing locations, including project-based Section 8 units within small, medium or larger housing facilities; scattered site ‘affordable housing’ units or apartment complexes for which rents are directly subsidized by B2H and/or the jurisdictions; and designated units within public housing facilities. Most of these units are owned by mission driven housing providers such as community development corporations or housing authorities. The ‘permanency’ of B2H housing for families varies as well: in many cases, families may stay indefinitely unless their

---

<sup>2</sup> Thirty or more additional families enrolled after April 1 but are not included in this analysis because six-month data (and relevant exit data) were not yet available in HMIS.

income rises to a point that makes them no longer eligible for subsidized housing; in some cases, however, long-term permanency will depend on increasing family income sufficiently to assume full rent payments after the initial two-year subsidy ends. In some cases, provisions are in place to provide these families with housing vouchers if they are unable to assume full rent payments at the end of B2H services.

Discussions during site visits, combined with information gathered through interviews with families and case managers, highlighted consistencies in practice across jurisdictions/providers as well as variations, especially in the degree of structure in assessment, service planning, and case management. Certain practices are emerging that may prove especially promising in helping families to move forward and/or in contributing to cross-system collaboration.

### **Summary**

Children and families enrolled in Bridges to Housing for 12 months are more stable in their housing, childcare or education settings, safer, and more likely to be doing well than in the period just prior to entering the program. Most gains that were noted at six months have been maintained through the first year. In addition, further gains in employment and employment readiness can be seen in the data. Significant challenges remain, particularly related to job readiness, job training, and employment opportunities.

Families interviewed for the evaluation are grateful to be housed and express deep appreciation for the help they have received for themselves and their children.

*“...[Bridges] is awesome...I don’t know where our family would be without it.”*

*-B2H Head of Household*

###

## BRIDGES TO HOUSING EVALUATION 2008 YEAR-END REPORT

### I. Background

Bridges to Housing (B2H) is a regional initiative aimed at moving high need homeless families out of the cycle of homelessness by providing permanent affordable housing and intensive case management services that build on the strengths of family members. Clark County in Washington State and Multnomah, Washington, and Clackamas Counties in Oregon joined together (along with cities and Public Housing Authorities) to develop Bridges to Housing. In addition to supporting families in their efforts to obtain permanent housing and progress towards self-sustainability, Bridges to Housing is developing regional solutions to family homelessness. At the coordinating and governance levels, B2H focuses on stimulating policy changes and the re-alignment of public resources and needed systems.

The first Bridges to Housing families were enrolled and housed in October of 2006 in Clark County. The project has rolled out gradually across the jurisdictions as housing and resources for case management have become available. Approximately 200 families have been enrolled in B2H to date. They have been placed in a variety of housing sites that are described later in this report. Case management services are linked with B2H housing and are provided by six different entities, three in Multnomah County and one in each of the other jurisdictions.

The evaluation of Bridges to Housing includes a longitudinal outcome study of children and families served by B2H, following them from the time of enrollment for up to two years; a process study focusing on the implementation of B2H and the experience of providers and families; and a comparison group study of the impact and relative effectiveness of B2H in improving outcomes for high need families and their children.

This 2008 Year-End Report builds on earlier findings<sup>1</sup> to focus on:

- Outcomes for families that have been enrolled for 12 months. Key outcomes include housing stability, safety, child-wellbeing, and family progress towards self-sufficiency. In this section, we also include an update on recruitment of a comparison group to examine the effectiveness of B2H in achieving these outcomes relative to the housing/services received by high need families for whom B2H was not available.
- Program retention, examining rates of retention, and the nature of early exits from B2H.
- Implementation, including adherence to common principles, variations in implementation, and practices that appear particularly promising in helping families to be successful and/or fostering system improvements.

---

<sup>1</sup> Bridges to Housing 2008 Mid-Year Report, August, 2008, Regional Research Institute, Portland State University.

## Evaluation Methods

The longitudinal study principally relies on data gathered by B2H case managers at intake and at six month intervals thereafter for up to two years. Providers submit data to the evaluation through the Homeless Management Information System (HMIS) that is required by the U.S. Department of Housing and Urban Development for certain federally-funded programs. Specialized templates for B2H were developed in collaboration with providers and the HMIS coordinators in the four-county region. HMIS data allows us to describe the prior history, needs, and characteristics of families served, the services they receive, and their outcomes over time.

**Report sample.** This Year-End Report includes data on B2H families submitted through the HMIS by mid-November 2008, including baseline data on 162 families, 6-month data on 96 families, and 12-month data on 44 families. Most data for the evaluation are collected from heads of households. Information collected pertains to the head of household, to the family as a unit or to one ‘focus’ child in the family. The focus child is identified by the case manager as the youngest school-age child in the home or, if no child is yet school-age, the child closest to school-age in the family.

**Interviews with B2H families.** This report also includes the perspectives of a sample of B2H families gathered through interviews conducted by the PSU evaluation team between early October and the end of December, 2008. The purpose of this round of interviews was to learn more from families who had been enrolled approximately 12 months about how their lives were changing as they progressed through the program and ways in which B2H had (or had not) been helpful. A copy of the interview guide appears in the Appendix, page 53.

The sampling pool consisted of 18 families that had participated in interviews with us last spring and summer, approximately four to six months after their enrollment. Among this group, five families had exited the program by the 12-month mark, two families were not able to schedule interviews within the appropriate time frame, and one family declined to be interviewed a second time. Interviews with eight of the remaining families are reflected throughout this report (two final interviews are scheduled for February, 2009).

Interviews were conducted in the families’ homes or another space selected by the respondent (e.g., a community room at the housing site). Most interviews lasted approximately an hour and a half, and participants received a \$20 gift certificate in appreciation of their time and assistance. All interviews were taped, with permission from the respondents. Transcripts were independently reviewed by two members of the evaluation team, who extracted comments from families pertaining to how their lives had (or had not) changed since enrolling in B2H. One respondent, Laura Wilson, volunteered to share her family’s story in more detail for this report (see page 21).

**Site visits and interviews with case managers.** The PSU evaluation team joined NPF in making a series of site visits to B2H providers in the fall of 2008. The purpose of these

visits was to update information about B2H housing sites as well as to review the implementation of the B2H service model. Information gathered in these site visits was supplemented by discussions with the Service Provider Workgroup<sup>2</sup> and telephone interviews with selected case managers. More detail about the purpose and nature of the visits appears in the Implementation section of this report. The site visit protocol can be found in the Appendix.

---

<sup>2</sup> The Service Provider Workgroup is attended by B2H case managers and supervisors and meets on a monthly basis as a forum for training and ongoing peer support.



## II. Overview of Enrolled B2H Families

As of mid-November 2008, data on 162 families enrolled in B2H were available in HMIS from providers in the four counties as follows:

- Clark County, Share ASPIRE 32 families
- Washington County, Community Action 15 families
- Clackamas County Social Services 14 families
- Multnomah County
  - Central City Concern 17 families
  - Human Solutions 53 families
  - Impact Northwest<sup>3</sup> 31 families

These families include 184 adults and 312 children. Most (84%) are single female parent households.<sup>4</sup> Family size ranges from one child to as many as seven children, but a great majority of families have no more than three children (94%). As the enrollment in B2H has increased, younger families may be entering the program: the average age of children has decreased from seven in mid-2008 to six years old, and 56% of all enrolled B2H children are six years or younger. Nearly a quarter of B2H children are no more than 12 months old.

### Race and Ethnicity

Seventy percent (n=113) of B2H heads of households are White. Others include:

- 17% African American (n=28)
- 7% American Indian/Alaskan Native (n=12)
- 5% 'Other' or 'Multi-Racial' (n=7)
- One head of household is Asian

With respect to ethnicity, 11% of B2H families report that they are Hispanic/Latino (n=17).<sup>5</sup> Compared to the 2006 Bureau of Census data estimate in each of the four counties, B2H is serving a greater proportion of non-White heads of households than appear in the general population of the region (see page 6). However, we do not have demographic data on the low-income population, (data on Oregon Health Plan recipients, for example) which would be a more accurate comparison to the B2H population.

<sup>3</sup> Formerly Portland Impact.

<sup>4</sup> Other family types represented in the data include: two parent family (12%, n=19); male single parent (4%, n= 6) and grandparents (1%, n=1)

<sup>5</sup> Note that following Census data protocol, race and ethnicity are separate questions. Of the 17 heads of households that report Hispanic/Latino ethnicity, six reported American Indian or Alaska Native, six reported White, one reported Black or African American, and 4 reported Other or Other Multi-racial.

**Race and Ethnicity by County and B2H Population**

	Clackamas County	Clark County	Multnomah County	Washington County	B2H Heads of Households
<b>Race</b>					
American Indian or Alaska Native	0.8%	0.9%	1.0%	0.8%	7.4%
Asian	3.6%	3.9%	6.1%	8.5%	0.6%
Black or African-American	0.9%	2.1%	6.0%	1.7%	17.3%
Native Hawaiian or Other Pacific Islander	0.2%	0.4%	0.5%	0.3%	0.0%
White	92.5%	90.2%	84.3%	86.3%	69.8%
Multi-racial	2.1%	2.5%	3.0%	2.4%	2.5%
Other	Not a Census category				1.9%
<b>Ethnicity</b>					
Of Hispanic Origin	6.7%	6.0%	10.1%	14.5%	10.5%

### Family Needs and Prior Resource Use

The Homeless Family High Resource User Screening Tool is used to establish eligibility for B2H<sup>6</sup>. This tool assigns points to a family based on the utilization of high-cost services over the prior 12 months. A family that scores eight or more points is eligible for B2H. The average score for a B2H family with intake data (n=150) is 14.6. Ninety-nine percent of all families scored 10 points or higher, which means that they had recent involvement with at least three social service systems and are considered to be a Very High Resource Users.

### Special Needs/Disabilities

The majority of heads of households (65%) reported at least one special need or disability at intake.

- Slightly more than one-third of B2H heads of households reported two or more special needs or disabilities.
- More than a third of B2H families (36%) were coping with mental illness.
- Almost that many families (32%) said they struggled with drug abuse.

The prevalence of special needs or disabilities appears to have decreased somewhat as the number of families in B2H has increased. For example, 57% (n=55) of heads of households with baseline data last May (n=104) reported a mental illness compared to 36% (n=59) of families with baseline data from the current sample (n=162). This reflects a continuing decline in the enrollment of families with mental illness (nearly 70% of families in the pilot phase had reported mental illness). Self-reported drug abuse also declined, from

<sup>6</sup> A copy of the High Resource Use screening tool can be found in the Appendix, page 51.

42% of families in the baseline data last spring to 32% in the total sample available this fall. This trend occurs across most special needs or disabilities, with the exception of alcohol abuse and physical/mobility limits, which have remained relatively constant or increased slightly.

One possible interpretation of these differences is that acceptance and/or enrollment practices have evolved such that families with the most persistent and severe problems are somewhat less likely to be enrolled in B2H than they were in the initial phase of implementation. If there has been a change in practice, it may reflect the early experiences of B2H providers (particularly in Multnomah County) when a number of families were enrolled who were not able to be successful due to the seriousness of their mental and behavioral health challenges (see the section on Program Retention and Early Exits, page 27).

### **Housing History**

*“... before when I was pregnant with my daughter...I was homeless, I was not in a good situation, you know, I never really felt stable, I never really felt comfortable...I didn't have a place to call home.”*

*-B2H Head of Household*

Most B2H families have a history of family instability and/or repeated episodes of homelessness. Nearly a quarter (n=38) entered B2H directly from an emergency shelter. Other living situations just prior to enrollment included:

- Transitional housing for homeless (20%, n=33),
- ‘Couch surfing’ with family or friends (19%, n=31),
- A motel/hotel (12%, n=20), and
- Substance abuse treatment center (7%, n=12)<sup>7</sup>.

*“I had gotten into it with my ex-boyfriend...it got physical...so, I had to get away from him and they put me in a hotel and put me on a list for a DV shelter. [My community nurse] came to me in the motel one day. She put me on a waiting list for housing...Bridges to Housing.”*

*-B2H Head of Household*

Families cited many different circumstances that contributed to their homelessness, but the top three primary reasons for most the recent episode of homelessness were reported to be domestic violence (31%, n=50), substance abuse (22%, n=35), and eviction (18%, n=28).

---

<sup>7</sup> Other prior residences experienced by 5% or less of B2H families: rental or own house/apartment (n=8), domestic violence situation (n=6), other (n=6), place not meant for human habitation (n=2), and jail or prison (n=2).

Eleven percent (n=17) of families reported reasons related to financial distress including loss of job, underemployment/low income, loss of public assistance, and lack of affordable housing.

In sum, B2H continues to enroll high-need families with histories of homelessness, challenges from physical, mental health and behavioral health challenges, and recent use of high-cost resources. Stable safe housing is the first crucial step towards a safer more secure future.

*“... I’ll always remember...the way I felt that day when they gave me my house keys. I will always cherish the Bridges to Housing Program for giving me that...The feeling I had when they gave me my apartment key, it felt like...I was safe.”*

*-B2H Head of Household*

### III. Building on Early Success: Outcomes at 12-Months

*“Over the last six months my fiancé got employed...it seems like everything is starting to fall into place. We’ve been able to go buy ourselves some new clothes...not hand-me-downs from somebody...good pants, shirts, and shoes.”*

*-B2H Head of Household*

In August, 2008, we reported outcomes for 43 families who had been enrolled in B2H for six months. Findings indicated substantial improvements in the circumstances for these families compared with the six months prior to enrollment, including greater stability in housing, reduction in domestic violence, increased child and family stability, and modest progress towards self-sufficiency. As of mid-November, 2008, 44 B2H families had 12-month data available in HMIS.<sup>8</sup> Among these families we hoped to see maintenance of these positive outcomes along with improvements in other areas that would suggest progress towards future self-sufficiency and wellbeing.

Overall, the 12-month findings suggest sustained stability for families and continued modest gains in some areas. We also see reflected in the data the challenge of helping these high need families achieve self-sufficiency within a relatively short time frame, given the barriers they encounter.

#### Housing Stability

*“I really believe that this is where I need to be and I’d hate to ever have to leave here, I would, it would really hurt me to, you know, for any reason.”*

*-B2H Head of Household*

B2H families remained markedly stable in their housing relative to their experiences prior to enrollment. Very few families moved in the first six months after entering B2H; moves during the second six months reflected practical circumstances as well as challenges, as indicated by the data in the following Table.

---

<sup>8</sup>The sample of families in the six-month data reported last spring differs somewhat from the sample with 12-month outcome data reported here because of early exits (between 6 and 12 months) and additional enrollments. Data in this report are based on only those 44 families that have baseline, six-month, and 12-month data in HMIS. Sample sizes vary slightly across different analyses because of missing data.

**Housing Stability**

<b>Six Months Prior to Enrollment (reported at intake)</b>	<b>Within First Six Months After Enrollment</b>	<b>Between Six and 12 Months After Enrollment</b>
95% of families had moved at least once. 44% had moved two or three times. 10% moved more than three times.	One family (2%) moved once.	Three families (10%) moved once.*

\* One family moved to a larger apartment within the same housing site, one to a different B2H housing site due to a fire in the apartment, and one to a substance abuse treatment facility.

Stabilizing children and families in housing changes lives in ways that are only partially conveyed through the HMIS data. Laura Wilson’s story (see page 21) describes the experience of a single family in B2H, but we heard similar themes throughout our interviews with B2H heads of households at 12 months following enrollment.

*“... when we first moved in here, every time we’d leave [my son] would say ‘we’re not coming back, we’re not coming back!’ And I’m like, ‘yeah we’re coming back, we live here’... I think he’s adjusted to that.”*

*-B2H Head of Household*

*“[Without housing] she couldn’t focus on other things or ways to take care of herself. Now that she is in housing she can focus on getting ahead.”*

*-B2H Case Manager*

**Safety and Family Stability**

*“Most of them are really motivated. They have the desire to get up on their feet. But it’s hard. They need to be clean and sober before they can do anything. But once they’re clean and sober, all the emotions from the past come up and it gets really hard.”*

*-B2H Case Manager*

B2H families also continue to be safer and more likely to remain intact than prior to entering the program. The 12-month data are similar to the findings at six months in that families are far less likely to have experienced domestic violence or child protective service concerns than when they were homeless. However, the data also reflect what case managers have told us about the challenges that emerge for families after an initial period of

stability in B2H. Domestic violence or unsafe parenting may occur or recur in this period. The following Table presents data on safety and family stability at the three time points.

**Child and Family Safety/Stability**

<b>Six Months Prior to Enrollment (reported at intake)</b>	<b>Within First Six Months After Enrollment</b>	<b>Between Six and 12 Months After Enrollment</b>
<b>Domestic violence</b> 44% (18 families) reported domestic violence (DV) in the prior six months.	One family (2%) reported an incident of DV in the first six months.	Three families (7%) reported that DV occurred during this period.
<b>Referrals to Child Protective Services</b> 12% (5 families) were referred to CPS	7% (3 families) were referred to CPS during the first six months.	10% (4 families) had a referral to CPS during this period.
<b>Out of home placements for children</b> 17% (7 families) had a child placed in foster care in the prior six months.	No families had a child placed in care.	One family (2%) had a child placed in care.

**Health Behaviors**

*“I’m exhausted. I had a seizure. I haven’t had them for years...and I had one in August. I went into a full Grand Mal seizure...I was taken to Providence... The seizure I had was caused by non-narcotic pain pills they gave me...I have to go see a neurologist still and I haven’t heard back on that.”*

*-B2H Head of Household*

There has been little change from baseline through the first 12 months in reported health behaviors with respect to the use of emergency care services to treat children and adults in B2H families. Approximately 45% of families reported at least one trip to the Emergency Room for an adult in the family in the six months prior to enrollment and again in the first six months in the program. That percentage increased to a little more than 50% in the second six months of the program. For children, trips to the Emergency Room fluctuated slightly from 41% of families reporting at least one visit for a child during the six months before intake to 34% during the first six months in the program, back to 44% during the second six months.

In talking with providers about these findings, we learned that the issues involved in these results reveal a system-wide problem in access to health care for vulnerable and low-income families. Case managers report that B2H families are unable to secure same-day or even same-week appointments with their Oregon Health Plan (OHP) health care providers,

even in the case of acute illness or trauma (ear infections, abscessed teeth, injury, etc.). Commonly they are instructed by their health care providers to go to Urgent Care clinics associated with Emergency Rooms because otherwise they will wait weeks or longer for an appointment. Our data do not distinguish between visits to Emergency Rooms and Urgent Care clinics, despite the differences in costs associated with these choices. Case managers acknowledge that B2H families may have trouble following through with preventive health care and/or responding early when illness first appears so as to avoid acute and critical care needs. However, the lack of access to regular health care providers for OHP recipients seems to be the larger issue. Given the high proportion of homeless families who have physical/health problems, high-cost health care utilization is unlikely to change unless the health care system develops a different way to respond to the needs of vulnerable low-income citizens.

### **Income and Employment**

*“I had been going to multiple different interviews...and I was running into a brick wall on my criminal record...everybody was like, ‘we’re not touching her.’ [My case manager] said ‘well, there’s this place that will give you a chance’...so, I went and I got a job! And I’ve been working there ever since.”*

*-B2H Head of Household*

We know from multiple sources – interviews with B2H families, interviews with case managers, discussions at the Service Provider Workgroup and in site visits - that employment is a challenging goal for many families. Heads of households may enter B2H with minimal preparation for work and with histories (criminal involvement, bad debt, poor credit) that can present nearly insurmountable obstacles to employment and may also overwhelm and discourage the individuals.

*“Most of them don’t have the belief when they come in. They feel beat down.”*

*-B2H Case Manager*

We also heard repeatedly that B2H clients have ‘a long ways to go’ before they will be ready for employment: they need GEDs, life skills training, preparation to be employees, job search skills, and training for jobs that will pay a living wage.

Nonetheless, determined families and committed case managers are finding ways to surmount obstacles and make a place in the workforce for some heads of households: B2H families continued to make modest gains in employment and employment readiness. Employment rates improved from 20% (n=8) at intake to 34% (n=14) at 12 months, with average hourly wage increases from \$8.30 to \$9.10. Furthermore, at 12 months 41% of all B2H heads of households were either enrolled in a job search/training program **or** a school or degree program, or both. Note also that the reduction from the first to second six month period in job training/search programs is likely a result of success in finding employment. These data are summarized in the following table.

**Employment and Job Preparation**

<b>Six Months Prior to Enrollment (reported at intake)</b>	<b>Within First Six Months After Enrollment</b>	<b>By 12-Months After Enrollment</b>
20% (8 HOHs) were employed.	29% (12 HOHs) were employed by the end of six months.	34% (14 HOHs) were now employed.
Average Hourly wage \$8.30	\$8.70 Hourly wage	\$9.10 Hourly wage
22% (9 HOHs) were In job search/job training programs	37% (15 HOHs) were in job search/training programs.	24% (10 HOHs) in job search/training programs.
20% (8 HOHs) were in school/degree programs	22% (9 HOHs) were in school/degree programs.	24% (10 HOHs) were in school/degree programs.

*“Sometimes we just have to get creative. I’ve got one client who is in an internship at a warehouse, started through a temp agency. It’s going to turn into a job for her.”*

*-B2H Case Manager*

*“This job [working with teens] she kept. I kept waiting for the call ‘I quit, I’m done.’ I didn’t get [the call]! She kept this one because she felt like she was getting respect at her place of employment, she made friends.”*

*-B2H Case Manager*

As important as employment can be to self-sufficiency and a sense of self-worth, it can also present challenges for vulnerable families, including managing the costs and logistics of childcare and transportation.

*“It might seem like a small thing, but if you’ve got four kids who go to three different schools, and you’re supposed to be looking for a job and getting to services, being able to get into a car in the morning and start it up is huge.”*

*-B2H Case Manager*

Moreover, parents can feel torn between the need to work and leaving infants or troubled teenagers at home alone.

*“I think once I wean him off of breast feeding, I’m going to start looking for work. I’ve been trying with bottles, but he just won’t make the transition...I’m kind of apprehensive leaving him with a provider while I’m breastfeeding...I don’t want him screaming all day long while I’m at work.”*

*-B2H Head of Household*

*“...I graduated ETAP (Evening Trades and Apprenticeship Program), so I do construction when I do work... [I’ve been called] for a couple of jobs, I want to work, I do, but I know that I’m scared of getting evicted over something my kids might do.”*

*-B2H Head of Household who reported serious behavioral challenges on the part of her teenage children*

Overall, employment and self-sufficiency for high-need families with a history of homelessness and instability involve complex and challenging questions that will not effectively be addressed by any single provider or service system alone. These questions include:

- What kinds of programs are needed to increase employability and job readiness for heads of households who are motivated but may have minimal or no work background?
- What are the entry level jobs that will produce wages sufficient to support families?
- What kinds of supports are needed, including childcare, transportation, health care, job coaching, mentoring etc., so that motivated heads of households can be successful not only in securing a job but also maintaining it over time?
- Who is responsible for helping families along the lengthy and arduous path towards self-sufficiency?
- How can systems work together to reduce/minimize barriers to employability for heads of households? Innovative programs are in place in some communities, but more are needed.

*“In Multnomah County we have this awesome program, Project Clean Slate, that allows a judge to expunge old tickets in return for community service. It’s a tremendous program, and we’ve been very successful getting the driver’s license. I don’t know how it is in other counties.”*

*-B2H Case Manager*

These issues are present every day for B2H providers and families, but significant progress for the population as a whole will require cross-system and multi-agency collaboration and the commitment of adequate resources.

### **Child Wellbeing**

*“...there’s balance to our life...and [my son’s] liking that balance...he’s trusting me that if I say I’m going to the store, I’m not going to be gone two hours...we’re much closer...I’m just happy I took the class to understand what he’s going through. We’re...just going through the stages, and I understand...that’s the best part of it.”*

*-B2H Head of Household*

There is widespread concern about the effects of homelessness on children. Concerns center on children’s health, mental health, developing social skills, and opportunities to be successful in school, given the instability in their lives, potential for poor nutrition and parental care, and the likelihood that they will be exposed to violence in their home and community settings.<sup>9</sup> In the development of B2H, children were an important part of the thinking and planning. The strengths-based Family Needs Assessment tool that was adopted by B2H assists case managers to create a holistic picture of children so that their needs can be identified and addressed. Children’s strengths—what they enjoy and do well—as well as any challenges or special needs are included in the assessment.

As noted above, the experience of children in B2H is markedly different from what it was in the period prior to their families’ enrollment in the program. Both at six months and 12 months, not only have children stopped moving from place to place, they are also:

- Safer from exposure to violence,
- Safer from inappropriate or inadequate parenting, and
- Less likely to be removed from their families and placed in out-of-home care.

In this section, we use data submitted by case managers through HMIS and from respondents in our interview sample to report on children’s<sup>10</sup> special needs, their experiences in school, and their access to primary health care. We have only limited data on services to children and the opportunities that B2H has provided for them, but parents in our interview sample frequently cite the help their children have received as the most important aspect of the program, second only to a roof over their heads.

---

<sup>9</sup> National Center on Family Homelessness: [http://www.familyhomelessness.org/work\\_research\\_reportcard.php](http://www.familyhomelessness.org/work_research_reportcard.php)

<sup>10</sup> The children reported on here are the focus children in each family, i.e., the youngest school-age child or child nearest to school age.

Data were available for this report on 38 focus children.<sup>11</sup> The average age of these children at intake was 6.4 years, with the youngest child one month old and the oldest child 15 years old. Many struggle with learning and behavioral difficulties. At 12 months, parents reported that nearly a third of the focus children have a learning disability (29%, n=11), and 42% (n=16) have a social, emotional, or behavioral concern.

Parents in our interview sample were particularly grateful for the help they've received for children who have challenging behaviors:

*"My daughter, she was diagnosed with Opposite Defiant and ADHD...since June, I'd say, before school got out. And she has made like a complete turnaround...I'm learning more and more about my own kid."*

*-B2H Head of Household*

*"My son and I just had a meeting with [the case manager] last week, and we're trying to get him in to a couple of classes...Tai Kwan Do, he doesn't want to take it for the fighting, but he wants it for the structure, because he knows with his ADHD, it's very hard for him. And as much as I cannot stand the medication, I know he needed it."*

*-B2H Head of Household*

*"We are working on getting into a parenting class because my daughter has issues on controlling her frustrations, she doesn't know how to calm down."*

*-B2H Head of Household*

**Stability and performance in school.** One positive outcome is that some children are more able to be successful in school settings.

*"I've tried to get my son in school...tried to get him speech therapy. His speech was real bad. He's a really slow talker. You couldn't really understand what he's saying...[Without Bridges] he never would have been in school...that's just the plain and simple. He never would have had his speech therapy. He has a private speech therapist that comes in once a week and works with him. But I would never have had that if this program weren't around. You can understand him! I'm so happy!"*

*-B2H Head of Household*

---

<sup>11</sup> Missing data required the exclusion of focus children in six families in our 12-month sample.

*“[My son] started Headstart... It took him a while to adjust, but we have a conference with his teacher on the 1<sup>st</sup> to go over the changes he’s made and achievements and goals he’s overcome... [Headstart] told us on the phone yesterday... that the last couple of weeks he’s been using his words a lot instead of pushing...”*

*-B2H Head of Household*

The HMIS data, as well as interviews with families, suggest that children are also performing better academically in school. At the time of enrollment just over a third (n=14) of the focus children were meeting grade benchmarks. By 12 months, more than half of the focus children were performing at grade level (n=21). In addition, more parents are aware of how their children are doing. At intake, 51% (n=19) of parents reported that they were unsure if their child met benchmarks in contrast to 18% (n=7) at 12 months.

In addition, parents reported greater school stability for children:

- The number of children who had attended two or more childcare/education settings in a six month period decreased from 35% at baseline to 10% at 12 months.
- Most children who attend school were attending regularly at all time points, with no more absences than would be expected in a community sample.

**Primary health care.** Children have primary health and dental care providers at higher rates after a year in B2H (most of this change occurs in the first six months).<sup>12</sup> However, for the reasons noted earlier in this report (see page 11), this does not appear to have affected the reliance on Urgent Care or emergency services to attend to emergent health needs.

**Primary Health**

<b>Six Months Prior to Enrollment (reported at intake)</b>	<b>Six Months After Enrollment</b>	<b>Between Six and 12 Months After Enrollment</b>
79% (30 children) had a primary health care provider.	95% (36 children) had primary health care.	97% (37 children) had primary health care.
68% had primary dental care	92% (35 children) had primary dental care.	95% (36 children) had primary dental care.

<sup>12</sup> Because many families are members of the Oregon Health Plan, rates are relatively high at the time of enrollment.

*“...there are a lot of things my son wouldn’t be able to do if it wasn’t for [the caseworkers] and I appreciate that. He went to ‘Elmo Live’...oh, my god, he loved it...and that’s probably something I would never have been able to do...that was a lot of money...there are just a lot of things that I would have never got to do with my son...and I wouldn’t trade that for the world...I see how my son enjoyed it and the impact it made on his life so it makes me want to do things differently. “*

*-B2H Head of Household*

It would be difficult to quantify the ways in which children’s lives have been enhanced by their inclusion in Bridges to Housing. We are learning, however, that flexible funds and especially the resources contributed by the Children’s Investment Fund for Portland resident have played an important role in providing services, supports, and opportunities for children. More information about the use of flexible funding is included in the Implementation section of this report.

### **Summary of Outcomes**

Children and families in Bridges to Housing are clearly more stable in their housing, childcare or education settings, safer, and more likely to be doing well than in the period just prior to entering the program. Most gains that were noted at six months have been maintained through the first year for families that remained enrolled in the program. Moreover, additional gains in employment and employment readiness can be seen in the data. Significant challenges remain, particularly in the need for additional job readiness and job training.

#### IV. Relative Effectiveness of Bridges to Housing: The Comparison Group

The evaluation of Bridges to Housing is designed to include a study of the effectiveness of B2H relative to the housing and services otherwise available for high-need homeless families in the four-county region. The objectives are to identify and recruit families into the comparison group who are similar in their needs to the B2H population but for whom B2H was not available and to compare the experiences of the two groups on selected key outcomes over time, including housing stability, family safety and stability, and measures of child wellbeing.

**Recruitment sites.** Five housing/service providers currently are helping to identify and recruit families into the comparison group. These sites are briefly described below.

- **Northwest Housing Alternatives/Annie Ross House (Clackamas County)** provides short-term housing for women who are victims of domestic violence. Some women enter with significant challenges, similar to families in B2H; others need short-term assistance and/or services. On average, women stay 44 days at the shelter.
- **Richmond Place (Impact Northwest)** provides transitional housing for up to two years, though most residents leave sometime between 12 and 18 months.
- **Arbor Glen (Human Solutions)** houses many families who are similar to B2H families but for whom intensive case management is not available. Families at Arbor Glen sites are identified as possible comparison group participants by the resident services coordinators.
- **Community Action of Washington County** shelter program houses homeless families for up to five weeks. As with other shelter programs, some families present multiple serious challenges to self-sufficiency; others need short-term assistance.
- **Share ASPIRE** provides drug and alcohol free housing for individuals and families at numerous sites in Clark County. Families are referred to Share by community-based providers as well as the state Department of Health and Human Services.

**Comparison conditions.** These housing options may be temporary (the shelter programs), longer-term (transitional programs), or potentially permanent. None of them, however, are able to provide the level of case management services over a two-year period that families in Bridges to Housing receive. If we follow a sample of families in the comparison group from the time they enter these programs for a period of 12 months or longer, we may be able to determine whether the resources of B2H make a significant difference in housing stability, child wellbeing indicators, and progress towards self-sufficiency.

**Identification, screening, and recruitment procedures.** To be eligible for the comparison group, families must meet the same criteria utilized for inclusion in B2H, i.e., a score of eight or higher on the High Resource User screening tool. However, because B2H providers in general appear to have given priority to higher need families (B2H families have an average score of 14 points on the HRU and only one family has scored less than 10 points), we have likewise prioritized families scoring ten points or more for inclusion in the comparison group.

Providers at the sites listed above identify and screen potentially eligible families as they enter housing and provide them with information about the study. Interested families are given additional information about the nature of the study, their rights as a research participant, the data they will be asked to provide, and how the data will be used (informed consent procedures and the data collection protocol, are included in the Appendix, page 55).

**Data collection.** Baseline data for the comparison group study are collected at the time of intake, either by service providers or by members of the PSU evaluation team. Follow-up data at six and 12 months after entry will be collected by the PSU evaluation team.

**Comparison sample to date.** Recruitment of families for the comparison group has moved slowly, in part because of very slow turnover at some recruitment sites. Families have entered these programs only gradually over the past nine months. The other challenge to recruitment reflects a larger systems issue. Families with the level of need and challenges facing B2H families are frequently not accepted for housing programs or housing support because of barriers in their background (prior evictions, criminal record, past due rent, or unpaid utility bills). As a result, it can be exceptionally difficult to identify and connect with families who would be eligible for B2H but for whom the program is not available. There is no alternative program – in most communities - to which these families are systematically referred for housing and assistance.

To date, 21 families have been recruited for the comparison group, with screening and baseline data submitted to PSU as of December 31, 2008. However, in reviewing the data, it appears that some of the families do not meet eligibility criteria and will be excluded from the study. Although clearly needing services at the time of entry, their scores on the HRU were not high enough to make them eligible for B2H or the comparison group. We anticipate expanding recruitment efforts in 2009 by working directly with agencies in the community that refer to B2H in order to identify and connect with more families who share a similar level of need with our B2H population.

## V. Family Story

Bridges to Housing client, Laura Wilson, graciously volunteered to share her family story for the Bridges to Housing End of the Year Evaluation Report. In this narrative, Laura shares with us the path that led her to the Bridges to Housing program. Her story reveals the multiple and severe challenges that B2H participants like her have faced including childhood instability, drug addiction, involvement with corrections, domestic violence, and having children with special needs. Laura also shared how the B2H program has profoundly impacted her life and the lives of her two young children, and provided her with the opportunity to turn her life around.

Laura has been enrolled in the Bridges to Housing program since November, 2007. She lives in B2H housing with her four year old son, Calvin and her four month old daughter, Kallie. She began the interview by reflecting on her childhood.



*[When I was little] I lived with my mom and dad - they were married... and my parents didn't get along very well... [one night] my mom packed our stuff up and we left... in the middle of the night. I think I was 10 or 11 [years old]... We moved up [to Oregon] and my aunt put us in an apartment. At this point I didn't like my dad... I'd gone through too much stuff with him. I'd seen too much. He was violent. I didn't like him and I would cry about it. And, [my Aunt] said, "one day I'll tell you something that will make everything clear". On my 15th birthday, I outright asked her, "is my dad my real dad"... and "is my mom my real mom?"...*

*It was really hard for me because when I found out I was adopted... I mean, most people look at it, like, "that's not my family". And doing drugs took that feeling away...*

Laura's struggle at a young age with drug addiction eventually led to criminal problems. She discussed her history with drugs and crime, and her path to recovery.

*When I was about 15 or 16, I started doing meth... it got me to that point where I was feeling good about myself, which was an incredibly stupid thing. But in all reality, I started dealing drugs and then I started slamming drugs. I really wanted to be accepted by everybody, so I just did what people were doing. I didn't care. I didn't have any emotions. I didn't have...anything.*

*I messed up when I was young and I didn't get caught for anything until the day I turned 18. [I got caught for] manufacturing, distribution, possession, and delivery all of a controlled substance. All class A felonies. All within 100 feet of a school. First charges... ever.*

*I had never been to jail. I was scared. I went to court and they put me on probation...I had failure to appear after failure to appear and finally the judge got sick of it and I did a total of 3 ½ years...but not consecutively... I was sick of getting locked up. You sit there and watch the same people come in and out. I mean, seriously, it's like a revolving door...I was like, "God, I don't want to be 40-years-old coming in here". So, this time when I went in I decided to change something.*

*I got released to a PO, they drove me to Portland and took me to DePaul [Drug Treatment Center]. That was hard. I did not want to look at myself and really look at why I did what I did. And after the first real month, I actually put effort into it... I really did. I opened my eyes and realized there are other ways to deal with pain and anxiety and depression than getting high.*

For Laura, maintaining sobriety and overcoming a criminal history are only two of the problems she has faced. As her story reveals, relationship problems and employment struggles can create overwhelming difficulties. Laura described the violence she endured during her first pregnancy and her limited options as an unemployed single mother with a criminal record.

*So, I'm pregnant. [My boyfriend] and I are fighting. I ended up breaking up with him. I had a very violent pregnancy with Calvin... I got thrown through a wall once... got hit once...very traumatic. [I had Calvin] and at that point in time I wasn't working and I was focusing on the baby and I had no clue what I was doing... [I] ended up moving out and getting a place. And, then I ended up getting pregnant with Kristopher.<sup>13</sup>*

*I was working for temp agencies; whatever they had available I would take. [I] worked for a great company. They loved me and I loved them. And then one day I found out they were being audited and they had to do a full background check. So I walked into my boss's office... I looked at her and I started crying... I said, "I love my job. I love this company. And I love the people I work with. But after you do your audit, I won't be here anymore". She said, "Why?" And I said, "Because I have a background". So I ended up having to leave that job... that was like my ideal job.*

---

<sup>13</sup> Due to the instability in her life at the time, including homelessness and unemployment, Laura was unable to maintain custody of Kristopher, who now resides full-time with his father. Laura has regular contact with Kristopher.



*I lost my apartment 'cause I couldn't pay, cause I didn't have a job. That's where it all just hit bottom. I didn't have anywhere to go... didn't have any money. So I put everything in storage... stayed where I could. I actually put my son with his grandparents; with his dad's parents... I stayed there for the first month and a half, but after that, he was the only one who was able to stay. So, I had to leave my son. I just felt like I'd messed my whole life up and I got to the point where I just stopped...*

## **Bridges to Housing**

In addition to drug addiction, many families enrolled in Bridges to Housing became homeless after escaping domestic violence. When Laura felt she hit bottom and had no other options, her community health nurse helped her find a domestic violence shelter and fill out the application to Bridges to Housing.

*I had gotten into it with an ex-boyfriend... it got physical... so, I had to get away from him and they put me in a hotel and put me on a list for a DV shelter. [My community nurse] came to me in the motel one day. She put me on a waiting list for housing... Bridges to Housing. It ended up my name came up and I went to a DV shelter. And then my time ran out, it was like three months, they only have a certain amount of time to stay at a shelter, so I moved in with some friends of mine in North Portland.*

*...Olga was on my phone from Portland Impact<sup>14</sup> telling me I need to call them so I can set up an appointment... I cried in the office, because with the background check I swore that I wasn't going to pass. So, when it came up I passed, I freaked out. I was approved. I got my keys for here November 8th. I walked in and it was empty, for one, and I was pregnant [with my daughter] and I didn't know how I was going to do anything. Olga told me I get to go shopping and buy stuff for the house. She told me that this is a program to help with what kids need. And I probably never would have succeeded if it wasn't for this program.*

According to Laura, B2H is much more than a housing program and the case management and services have been essential for her and her children. Her son has made drastic developmental improvements in the last year and Laura feels this would have been impossible without the help of B2H case managers.

<sup>14</sup> Now Impact Northwest.

*I've tried to get my son in school... tried to get him speech therapy. His speech was real bad. He's a really slow talker. You couldn't really understand what he's saying. And I had nothing. I had no knowledge of even where to start... none. And he needed the help... where he was at wasn't where he was supposed to be at. [Then we] got into this program and he started immediately for speech therapy. Now he's at Headstart Monday through Thursday and every other Friday.*



*You can understand him! I'm so happy! He's doing his numbers, colors... He's talking! Saying the actual names of objects! He never did that before... never... and now he can! I love it! He's potty trained... completely potty trained. I love that too!*



*[Without Bridges] he never would have been in school...that's just the plain and simple. He never would have had his speech therapy. He has a private speech therapist that comes in once a week and works with him. But, I would have never had that if this program weren't around. I would have never known where to go. When you've got kids and there's no program to help you, then you don't get help. You get put on waiting lists that are two, or three years out. So, [B2H is] a godsend... really.*

*I would have never of had everything I have, not just objects, but even a sense of stability if it wasn't for Bridges... really. I've never had this. I can sit down with my caseworker and they will help me or they will go on the internet and find out resources. So, it's a really good thing, it really is. And, Lord only knows where I'd be without it... or where my kids would be for that matter...*

*The program is not about housing... well it is and it isn't... you have to look at the big picture. Calvin has a 14 month pass to the zoo. He went to zoo camp for a week... a year pass to the children's museum. He's gotten school clothes, [a]backpack, books, puzzles to work with him on his motor skills. He went to a three day camp at the children's gym... things that I couldn't do... things that my son wouldn't get to experience and learn about if I hadn't had that service to help him...*

*And it's not just about the housing and it's not just about the money. It's about knowing that there is somebody there. They are there to help you.*

## **The Recent Birth of her Daughter and Looking Forward to the Future**

As a pregnant single mother without employment, Laura felt her options were limited. As Laura said, Bridges to Housing has been a "Godsend". In particular, Laura had no

financial resources to prepare for the birth of her daughter. B2H case management was able to prepare Laura for Kallie's arrival in ways she never expected.

*I mean I [had] nothing for a girl... nothing. They let me go shopping for her. I got a crib. I've never had a crib. Ever. It was like the feeling of, "Wow, this is really real?" I've cried more since I got into this program than I have in my entire life.*



Laura is very excited to return to work. She hopes to find quality childcare for her son and daughter so she can maintain employment. At the end of the interview, Laura reflected on how B2H has helped her throughout this last year. B2H has had an inestimable impact on her family. Yet, the goals she hopes to accomplish are not completed. With the help of Bridges to Housing, she continues to develop emotional and professional skills that are needed to ensure her stability in the future.

*Now I can actually sit down and write a list of what I need and do it myself. I wasn't able to do that before. My rent is paid every month no matter what. My phone is paid every month because I have to have it to communicate with doctors and caseworkers about my personal life. If I really, really need something, I know I can call. She's [Kallie] got everything... diapers... I buy her wipes. I asked Olga to do that before and now I'm doing it. It's like, wow, responsibility.*

*Without this program, I would not be where I am right now... at all... possibly I wouldn't have my children right now. It's a Godsend. It's the best thing that has ever happened to me. It's something I can't even begin to express.*



## **VI. Program Retention and Early Exits**

One of the underlying assumptions in the design of B2H was that high-need, high resource-using homeless families would require at least two years of stable housing combined with intensive case management to move towards greater stability and self-sufficiency. In evaluating B2H, stability in housing during the first two years is an important intermediate outcome.

At the same time, an overarching question for B2H, and part of the national homelessness research agenda, is how to determine the level of service needed to address the broad continuum of need in the population of homeless families. Some families may need less intensive and less costly programs than B2H; others may need a higher level of intensity or a different structure. It is important to examine retention and program exits with both these possibilities in mind.

### **Retention Rates**

The overall program retention rate is reasonably high within the first six months of services (88% of families stayed in place) and moderate within the first 12 months of service (64% of families remained in their B2H placement). A number of families also exited between 12 and 19 months after enrollment, bringing the total of early exits to 34 families out of the 117 enrolled prior to April 2008.<sup>15</sup>

The reasons for exits, destinations to which families exited, and the needs and characteristics of exiting families relative to those that remained in B2H housing are described below. Information extracted from HMIS is balanced against the reports of family members we interviewed as well as discussions with case managers.

### **Reasons for Exits**

When families exit B2H, case managers complete the B2H file in HMIS with information about the reason the family exited and the intended destination. Reasons for exit are then coded 'positive' or 'negative' signifying either voluntary exits or exits that result from evictions and/or termination from the program.

**Positive exits.** Approximately 35% of the early exits were designated as 'positive'. These were all voluntary exits among families who left for another housing opportunity, completed the program, or left for some other reason that was considered 'positive.' In discussions during site visits, case managers reported that – despite the expectation that B2H housing would be permanent - for some families, moving out is a marker of personal growth, empowerment and increased self-sufficiency. Leaving B2H behind signifies leaving the past behind and making a fresh start.

---

<sup>15</sup> Thirty or more additional families enrolled after April 1 but are not included in this analysis because six-month data (and relevant exit data) were not yet available in HMIS.

*“I can’t stress enough how much [Bridges] was really there for me...I’ve got a lot of gratitude and I’ve taken the things that I got from that program and continued moving forward with them. [My case manager] gave me the resources and the tools and I took them and ran with it...”*

*-B2H Head of Household who had a ‘positive’ early exit*

For other families that exited voluntarily, though, the outlook is less certain. For example, a head of household may receive notification that she has been selected to receive a tenant-based housing voucher. This opens up the possibility of other housing options in the community, which may be very appealing, particularly if the family is living in a large housing community with other high-need families.<sup>16</sup> Exiting B2H may be a good choice if the next steps are consistent with the family’s needs, capacities, and resources. However, it is difficult to say how the choice to leave may affect longer term outcomes for families if core underlying needs for services and supports remain unaddressed.

**Involuntary exits.** Roughly 65% of the premature exits from B2H (22 families) were designated as ‘negative’, signifying eviction or termination from the program as a result of non-payment of rent, criminal activity, other lease infractions, or conflicts with the program. Among these families, three heads of households were jailed, one went to an emergency shelter, another to a treatment program, a few went to stay with friends, family, or in other housing. In a number of cases, the exit destination was unknown.

It is likely that most of these families were not able at the time to benefit from the services provided by B2H and would have needed a higher level or different type of service to stabilize in housing and be more successful. Moreover, in some cases, behavioral issues created unacceptable safety concerns for the community. However, there appear to be a variety of other circumstances that have contributed to some evictions including, for example, lease infractions related to excessive noise when large families are housed close together, or conflicts with property managers or other tenants. It is difficult to know whether some of these involuntary exits might have been prevented and by what means.

### **Family Needs and Likelihood of Retention**

The number of families represented in the data is still relatively small (117 in the analysis of retention) and the number of exits (34) still smaller, which makes it important to be cautious about interpreting the findings. However, there are several differences between the families that exited voluntarily, those that were evicted/terminated, and those that remained in B2H. If these differences hold as the sample size increases, the findings may help in system-wide planning to address the broader continuum of needs among homeless families.

---

<sup>16</sup> Case managers and families both note that tenant conflict, noise, and concerns about illegal or unsafe activity on and around some properties can create aversive conditions for tenants, potentially prompting moves.

On the High Resource User screening tool, for example:

- Families whose exits were coded as ‘negative’ (involuntary) had higher scores (an average of two points higher) than families who exited voluntarily.<sup>17</sup>
- Families with involuntary exits also scored higher than those who remained in B2H.
- Families that remained in B2H scored similarly to those that exited voluntarily (for ‘positive’ reasons).

**Average Scores on High Resource Use Screening Tool**

Involuntary exits (n=22)	Voluntary exits (n=12)	Families that remained in B2H (n=83)
HRU 16.0 Range 10-26 SD 5.0	HRU 14.0 Range 10-18 SD 3.5	HRU 13.8 Range 10-26 SD 3.8

These differences are consistent with B2H data reported in the past<sup>18</sup>, suggesting that a higher level of prior resource use may be predictive of the need for a more intensive or different type of service than is available in a voluntary community-based program such as B2H. The difference in average score is not large, however, and reflects only the fact that *some* of the families who were not able to be successful in B2H entered the program with scores at the very high end of the range (scores from 18-26) while among the other groups (positive exits and families that remained in B2H housing), scores tended to cluster between 10 and 16.

Differences in specific resources utilized prior to enrollment as well as special needs reported by families at the time of enrollment are presented below. Particularly striking is the substantially greater prevalence of mental illness among families that were not able to be successful in B2H (involuntary exits) than in the other groups. This finding is consistent with reports from case managers of the difficulties in accessing services for B2H clients with mental illness and the barriers that serious mental illness can present to housing stability.

*“Honestly, my depression and...how I isolate myself does not help me to keep a case manager, a counselor, or anything, because a lot of times it’s just like I feel I can’t do anything...”*

*-B2H Head of Household*

Prior use of domestic violence services is more prevalent among the group of women that remained in B2H housing than in either of the groups that left. Safety concerns may

<sup>17</sup> These scores reflect the number of different high-cost resources needed by the family in the 12 months prior to enrollment.

<sup>18</sup> See Bridges to Housing Evaluation, Year-End Report, 2007.

encourage some victims of domestic violence to stay in B2H housing; in other cases, victims of domestic violence may be reluctant to abandon B2H resources and case management services as they prepare to care for themselves and their children. It may be, also, that B2H providers are especially experienced and skilled in working with this population, which could encourage retention.

Prior criminal involvement in this sample, on the other hand, was higher among families that exited voluntarily than in other groups, a finding that is somewhat hard to interpret. The 'positive' exits is the smallest of the sub-groups (12 families) and therefore this apparent difference could be an anomaly that will disappear as the sample size increases. Moreover, we have no information about the nature of prior criminal behavior so it is difficult to extrapolate to future behavior.

#### Prior Resource Use and Special Needs Reported

	Involuntary Exits (n=22)	Voluntary Exits (n=12)	Families that remained in B2H (n=83)
<b>HRU score (average)</b>	16.0	14.0	13.8
Mental health treatment in prior 12 months	52%	33%	30%
Foster care involvement prior 12 months	38%	8%	14%
Physical/cognitive health issues prior 12 months	62%	33%	48%
Domestic violence services	38%	33%	53%
Corrections systems involvement	29%	58%	19%
<b>Special Needs</b>			
Mental illness	77%	33%	35%
Dual diagnosis	18%	0%	11%
Self-reported drug abuse	36%	25%	34%

#### Program Factors

Program and system factors may also play a role in the retention or exclusion of families from B2H. These might include:

- The relationship between B2H service providers and housing providers and their capacity to work together to retain challenging families, particularly those struggling with mental illness, substance abuse, dual diagnosis, or behavioral issues.
- Provider philosophy in working with families and the degree of structure in the case management approach.<sup>19</sup>
- The training, knowledge, and experience of individual case managers in working with very high need and challenging families.

<sup>19</sup> The Corporation for Supportive Housing report on Family Permanent Supportive Housing (Bassuk, Huntington, Amey, & Lampereur, February 2006) suggests that programs that exert greater 'control' over residents have lower retention rates but may be more successful than 'low control' programs in achieving positive outcomes for residents who remain housed.

- The availability and access to needed services such as mental health and substance abuse treatment.
- Contextual issues such as the size and environment of the housing community, on-site case management and/or other services, and/or the availability of additional support through a resident services program.

As B2H accumulates additional data on families who are or are not successful in B2H, it will be important to consider how these programs and systemic issues—and their variations across sites—also may affect outcomes. More discussion of some of these issues appears in the following section of this report.



## **VII. The Implementation of Bridges to Housing**

In the fall of 2008, the PSU evaluation team joined NPF staff in a series of visits to the B2H providers in each of the four counties. The purpose of these visits was to update information about B2H housing sites as well as to review the implementation of the B2H service model. Site visits were organized around a series of questions covering current and upcoming housing placements, the referral process, screening, intake, assessment, case management services, graduation/termination, early exits, and related issues (the complete site visit protocol is included in the Appendix to this report, see page 67).

Participants in the visits varied across the sites, but typically included executive directors or housing directors, supervisors, direct line staff (case managers or family advocates), NPF staff, PSU evaluation staff, and representatives of Multnomah County when appropriate. In some instances, a property manager and/or B2H family member attended as well. Site visits generally lasted between two and three hours and were conducted at one of the housing sites or an administrative office of the provider.

In this section, we report on information gathered from these site visits, supplemented by administrative data submitted to NPF by B2H providers as well as interviews with case managers and families conducted by the PSU evaluation team. Following a brief overview of B2H housing sites is a discussion of the implementation of the B2H service delivery model, noting common themes across providers as well as some of the variations in implementation. A number of B2H practices are highlighted that appear especially promising in working with families and/or promoting system improvements.

### **Housing Sites**

Site specific information about B2H housing is included in the Appendix to this document (page 71). This information illustrates that B2H is rolling out across a wide range of housing locations, including project-based Section 8 units within small, medium or larger housing facilities; scattered site 'affordable housing' units or apartment complexes for which rents are directly subsidized by B2H and/or the jurisdictions; and designated units within public housing facilities. Most of these units are owned by mission driven housing providers such as community development corporations or housing authorities. B2H families are housed in dense urban areas and more open suburban locations in outlying areas.

The 'permanency' of B2H housing for families varies as well. In many cases, families may stay indefinitely unless their income rises to a point that makes them no longer eligible for subsidized housing; in some cases, however, long-term permanency will depend on increasing family income sufficiently to assume full rent payments after the initial two-year subsidy ends. In some of these latter cases, provisions are in place to provide families with housing vouchers if they are unable to assume full rent payments at the end of B2H services. In other cases, the promise of long-term permanency may not be fulfilled. In all cases, sustained tenancy depends on the family's ability to adhere to the provisions of the lease.

B2H case management is provided on-site at some of the larger locations; in other settings, the case manager travels between two or more locations. Resident services and/or community space are available at some but certainly not all properties. Amenities vary substantially as well and range from extensive (childcare, green space, playgrounds, computer rooms, etc.) to minimal. Finally, some housing sites are primarily made up of one- and two-bedroom units; others include or comprise exclusively larger apartments, housing many more residents per unit.

All these variations constitute important contextual factors that may influence the implementation of B2H services as well as directly influencing outcomes for families.

### **Case Management and Service Delivery**

The program model for B2H was designed by the Service Provider Workgroup in collaboration with NPF. Flexibility in the provision of case management was considered important in light of the highly individualized needs of families. Flexibility in other aspects of the program was also important given the numerous structural and procedural differences across the counties and providers. The B2H model that was agreed upon called for housing/service providers to:

- 1) Serve families at risk of chronic homelessness whose needs are reflected in their prior system involvement. B2H providers agreed to use a High Resource Users screening tool to determine eligibility and to admit families that scored 8 or more points on this tool.
- 2) Provide permanent housing at the time of enrollment or as quickly as possible thereafter.
- 3) Provide intensive case management services, with a ratio of no more than 15 families to one B2H case manager.
- 4) Assess the needs of families from a strengths perspective using the Family Needs Assessment tool adopted by the Service Provider Workgroup.<sup>20</sup>
- 5) Focus on the needs of children as well as adults in the families.
- 6) Utilize flexible funds to address individualized and emerging needs of families.
- 7) Coordinate services with other systems with which the families were involved.

Site visits allowed us to review adherence to these various components of the model, learn about variations in implementation across the region, and identify practice approaches or program adaptations that seem especially promising in helping families to progress.

---

<sup>20</sup>Originally developed at Human Solutions in Multnomah County.

## 1. Serving at-risk and ‘high resource using’ families.

Despite variations across the counties in specific mechanisms and procedures, there is considerable adherence to core principles in the referral and eligibility determination processes for B2H, including use of the High Resource Users screening tool and acceptance of families that score in the high or very high range.

**Referrals.** Referrals most often come from community providers either to a centralized public or private gate-keeping entity (as is the case in Multnomah County), directly to the provider (for example, Share ASPIRE in Clark County), or to a partnership of the two (as in Washington County’s collaboration between the County Department of Human Services and Community Action). In some jurisdictions, referrals are only accepted from specific providers (e.g., Multnomah County). In other cases, there are no specific restrictions about referral sources; families may also self-refer in some jurisdictions.

**Eligibility determination.** The High Resource User screening tool is routinely utilized to pre-determine eligibility. Across the board, B2H is serving high-need, high resource-using families based on this tool. However, some providers are giving priority to higher-need families among those that screen as eligible because of the greater case management resources available for B2H families. In other cases, families are accepted if they are ‘next in line’ on a wait list (in Clackamas County, for example, families are accepted if they are ‘next in line’ and the case manager then assists the family to locate and secure housing). In Multnomah County, ‘next in line’ is a fluid concept that also considers the specific housing available, the family’s needs, and other considerations. Share ASPIRE in Clark County requires that a family be working with a therapist or other provider in order to be eligible.

**Promising Practice:** *When families apply to DHS in Washington County for assistance, they meet first with a case manager for intake and screening, then return for “holistic assessment” process including drug/alcohol needs, mental health needs, cognitive concerns, vocational rehab, career, child care needs, etc. The B2H case manager attends these sessions when slots are available so that she can identify homeless families that might be eligible.*

Across all jurisdictions, there are procedures in place to respond to referrals and make final decisions about eligibility and acceptance. The ‘gatekeepers’ may be internal to the organization (as in Clark County) or may include multiple systems (Clackamas County, for example), but in all cases there appears to be a committee process to review and accept. Once that occurs, outreach to families is immediate.

**Promising Practice:** *Clackamas County established B2H in collaboration with the Homeless School Liaison program. All referrals come through or are shared with the Liaison program (except when school is not in session) which ensures that the Liaisons are aware of the families and can connect them with all available resources. Not only has this helped B2H families but it has also fostered communication and collaboration among the School Liaisons and between that program and other systems in the county.*

**Wait lists.** The use of wait lists has varied across the jurisdictions and has depended also on upcoming availability of B2H housing/case management. When wait lists are used, gatekeepers report that it can be difficult to maintain contact with families who frequently must come up with other solutions before a B2H slot opens up for them. The exception is Central City Concern (CCC) in Multnomah County. CCC works closely with a network of substance abuse treatment providers and maintains a wait list of families who will be coming out of substance abuse treatment programs needing housing. This wait list informs referral to B2H but also to other housing options as well.

## **2. Providing housing first.**

B2H was designed as a permanent housing first model, aimed at meeting the need for safe secure housing as quickly as possible. The success of this model depends on partnership between service providers and housing authorities and/or property owners/managers to secure housing for families who have multiple needs, may have disabilities of one sort or another, and might not otherwise be approved for a subsidy or a lease. Special arrangements have been worked out with housing authorities in Multnomah County to approve families who may initially be denied housing subsidies but are subsequently approved based on a letter of appeal and the commitment of B2H to provide services. In other jurisdictions, providers work directly with landlords to navigate the challenges and barriers that families present.

Providers report that considerable time and effort on the part of case managers is necessary to accomplish this first task of securing housing and that it does not work well to expect families to manage this process without assistance. In some cases, families are housed within a few weeks (or even less). In other cases, it has taken up to two months and occasionally much longer. It has been difficult, for instance, to find housing for large families in a tight rental market (in Clackamas County, for example).

**Initial engagement and the enrollment process.** In the early effort to adhere to the ‘housing first’ philosophy, B2H providers in the pilot phase enrolled and housed families as quickly as possible. In some instances (particularly in Multnomah County), families did not fully understand the purpose of B2H and may not have met the case manager or other provider staff prior to being housed. Under these circumstances, it proved difficult to establish relationships or engage families in the case management process.

A number of these early B2H families were not able to be successful in housing and exited fairly quickly, in some instances because of issues that threatened the safety of the community. These families very likely needed a higher level of service to be successful and may not have been suitable for a voluntary program such as B2H.<sup>21</sup> One of the results of these early experiences is that providers in general have taken a more careful and somewhat slower approach to enrolling families.

---

<sup>21</sup> See Section on Program Retention and Early Exits, page 27.

Usually this process occurs over several meetings, which may be necessary to complete the housing application process but also allow time for the case manager and family to begin to engage with one another. This is a period during which the provider can assess the families'

**Promising Practice:** *To enhance early engagement, Impact Northwest asks that the referring provider remain involved for a period of time after a new B2H family is enrolled. This 'bridging' helps to connect the family to the program through a 'warm handoff'. Moreover, B2H staff attend quarterly meetings with referring agencies to share information, address concerns, and jointly problem solve to serve families.*

willingness and ability to follow through with appointments and tasks, and can also explain in more detail the resources that B2H offers and the expectations of families who enter the program. Some programs provide written materials describing B2H. Virtually all have a 'participation agreement' for families to sign. Most families, according to provider reports, are highly motivated at this stage, grateful for the housing, and appreciative of the advocacy

**Promising Practice:** *Impact Northwest separates data entry and the quality assurance process from case management, thus freeing case managers to spend more time with B2H families.*

and/or case management offered. A small number of families are not eager for case management, at least initially. One provider reports screening out about 10% of the prospective B2H families at this stage.

### 3. Providing intensive case management.

The 1:15 ratio between B2H case managers and families, along with available housing, governs the enrollment of new families, allowing sufficient time and energy for work with high-need families. By and large, the ratio appears to be steady across the jurisdictions, although some case managers report participating in a range of additional activities in their organizations, potentially diluting their efforts with B2H families. On the other hand, when families exit B2H, case load size may diminish for a time until the open slot is refilled. In Clackamas County, a part-time administrative staff person supports the work of the case manager, thus allowing her to spend more time in direct service. The B2H case load has been increased to balance this resource by taking on a number of families referred by the Drug Court, which provides oversight and assistance to the families as well. In all of the jurisdictions, families are likely to be involved with multiple service systems (TANF, child welfare, and others), which may bring additional resources and varying levels of service depending on the need, the circumstances and the worker. In the end, the level of service B2H families receive will vary considerably as a function of their multi-system involvement. Case managers for B2H may be operating as part of a larger team or may be the single support to the family.

**Engagement in case management.** B2H was designed as a voluntary program that relies on engaging families in a helping relationship so that once housing is in place and the family has had a chance to stabilize, underlying issues that lead to family homelessness can begin to be addressed. This model is challenging to implement if families enter the program

primarily focused on securing housing and are less interested in receiving other kinds of assistance. As noted earlier, this challenge occurs with a relatively small number of families but can be difficult to manage. There is considerable variation in how it is addressed. Approaches to engagement lie on a continuum from almost entirely family-driven to more structured and/or assertive outreach and engagement strategies.

*“They told me they were going to be up in my business...I said I didn’t mind...and they’ve been awesome.”*

*-B2H Head of Household*

At the family-driven end is the ‘family advocacy’ model, in which case managers explain to families that they are ‘there to help’ with support and information, as well as some discretionary funds to offer if the family needs assistance. Outreach is ongoing, but low key and non-assertive. Families may engage immediately and begin to seek out and accept help; they may gradually engage and begin to make themselves available for assistance (or begin to request assistance), or they may not engage at all.

*“Across the board, when they come to us they are somewhat guarded and suspicious of getting involved. They’ve been through so much, dealing with the systems – all the systems – all their lives.”*

*-B2H Case Manager*

At the other end of the spectrum are approaches that have clear expectations of weekly contact and a goal-setting process with families. Among some providers, this appears to be communicated to families as expectations for their participation. In other cases, the expectations appear to be of the program staff to engage and maintain engagement with families rather than of the family to comply with participation requirements. For example:

- One case manager told us she explains to the family that they will be meeting once a week. The concept of ‘voluntary’ is not introduced.
- Another tells families that the program is voluntary but (in the case of reluctant clients) that her job requirement is that she sees each family every week and she needs their help to make that happen.
- Another said ‘It is really up to the family. They get in touch with me if they need something.’

These contrasting statements reflect relative degrees of program structure/control that may in turn affect certain outcomes.<sup>22</sup> One way or another, however, some families are easier to engage than others, and case managers bring a range of skills and strategies to the process.

---

<sup>22</sup> Corporation for Supportive Housing report on Family Permanent Supportive Housing (February 2006).

**Ongoing case management.**

*“I know my case manager will do whatever she can to make sure we don’t go back on the streets. We talk about everything. She helps me out with budgeting...we have a paper that states the long-term and short-term goals and how to get to them.”*

*-B2H Head of Household*

Case management meetings with families occur in their homes and/or in the case manager’s office. Some providers explicitly alternate the location of contacts in order to monitor the home situation. Among other providers, the process is more fluid and informal. Specific contacts are not logged and reported to the evaluation, but based on discussions during site visits and prior research on ‘intensive’ programs elsewhere<sup>23</sup>, it is unlikely that families are receiving more than one contact per week and in many cases less. Case managers told us that they hear frequently (sometimes daily phone calls and/or drop

in visits) from some B2H families. Other families require extensive ongoing outreach to maintain any contact at all.

**Promising Practice:** Case management for B2H families at Impact Northwest includes sitting down with each family every month to create a budget. This structured part of the program has proven to be educational and empowering (see Family Story page 21 in this report). It also helps the case manager monitor the family’s financial situation and intervene early if problems surface that could threaten stability in housing.

The level of contact appears to vary from several times per week (sometimes daily phone calls) to routine visits once per week to ‘at least monthly but sometimes more often.’ Collateral calls to other service providers to locate resources,

or to advocate for the families also factor into the intensity of service delivery. None of the case managers reported that family needs begin to taper off in the second year of B2H services. Many families that are nearing their 24-month mark will need significant continuing support.

*“It’s going to suck when [case management] ends ‘cause you’re not going to have that to fall back on when you do need it...I know that the caseworkers will be there if you need any support, but the support we get now and the support that is going to be available to us after the program ends is a lot different...financially...the caseworkers aren’t going to be coming to your house and helping you...emotionally...if you need someone to talk to they’re going to be there for you...you call them and they’re not going to turn their back on you...but when it comes to having that reliable person to fall back on, they’re not going to be there, they can’t...”*

*-B2H Head of Household*

<sup>23</sup> Corporation for Supportive Housing report on Family Permanent Supportive Housing (February 2006)

#### 4. Utilizing strengths-based assessment and service planning.

*“It’s baby steps. What we try to do is empower them, show them the possibilities. And they can just take off.”*

*-B2H Case manager*

One of the provisions of B2H was a strengths-based approach to working with families. To support this practice, providers agreed to use a strengths-based Family Needs Assessment tool that was adopted by the Service Provider Workgroup during the development of the B2H model. This comprehensive tool captures family strengths, family housing, credit, employment and income history, special needs and challenges for adults and children, and their hopes and dreams. It is intended to serve as the basis for goal-setting and service planning with the family.

**Promising Practice:** Central City Concern uses a team approach, combining intensive case management with strong clinical input from an addictions/mental health specialist who works directly with families as well as providing support to case managers.

Experience with the tool has been mixed. Virtually all B2H providers (case managers and their supervisors) indicate that it seems long, is redundant in parts, does not fit all circumstances well, and is difficult to administer to families early in the relationship-building stage. In practice, the use of the Family Needs Assessment varies along a continuum. Some providers feel the tool is a barrier to developing rapport with the family and that gathering information in such a formal way might make the families feel uncomfortable. Others may use parts of the tool in an interview with the family and/or may give part or all to the family to fill out on their one.

At the other end of the spectrum, another provider routinely administers the assessment over two to three meetings early in the engagement phase, using Part A (strengths and needs) to gather information and Part B (goal setting) to make plans with the family. This same provider helps the family to produce a written goal statement with action plans for the first 30 days, one to three months, and four to 12 months. She reviews the goals and progress at each subsequent meeting.

Despite these differences in the degree to which assessment and planning are structured, all case managers and supervisors very likely would agree that the relationship between family and case manager is critical in helping families.

*“We can do all the mechanical things like an assessment or the service plan, but the big thing that stands out for me is the relationship. Being by their side and supporting them every step of the way.”*

*-B2H Case Manager*

*“It’s about community and timing and relationship. You can talk about assessment and making plans, but people aren’t there yet. It’s more the day-to-day relationship that works. You’ve gotta look holistically, but you have to take some time. “*

*-B2H Case manager*

**Responding to individualized and emergent needs.** We have heard repeatedly and reported in the past<sup>24</sup> that families entering B2H are grateful to be housed, have many challenges in the start-up period (even just setting up a household), and may do well for a period of time if those initial needs can be addressed. However, there appears to be a period of destabilization for adults and children after a few months that can result in additional difficulties in the first year. Case management visits often are devoted to dealing with emergent issues and may be highly individualized. As noted earlier, the degree of structure varies from provider to provider and from worker to worker. Some case managers work with written goal statements and some have routine tasks they do with clients. Others work exclusively with what families are facing in the moment.

*“Whenever she needs a resource, she will give me a call. At the beginning, I’ll give her a number or show her how to find a resource on-line. Now she does it on her own. (For example) she has an apartment full of furniture and all of it is donated....I showed her how to go to the [agency] website and find donated furniture and she did it on her own.”*

*-B2H Case Manager*

*“More than once a day, every day, I was there. (I’d ask), ok what are we going to do? I’d have fun with them, cheerlead them. I got them shampoo and mouthwash, and things to make their house smell nice. We passed [the housing inspection]! I was so excited. I was involved, too.”*

*-B2H Case Manager*

*“[My case manager] said ‘let’s just do it!’ and she went with me to take my driver’s test and get my driver’s license. That was awesome!”*

*-B2H Head of Household*

---

<sup>24</sup> Bridges to Housing Evaluation, Year-End Report, 2007.

*“I’m there for her when she needs me...All she needed was a little help, a little push, and the housing and education. B2H gave her that little lift she needed. Now all she needs is a job and we are working on that. She’ll be ready to go on her own.”*

*-B2H Case manager*

## **5. Focusing on children.**

During site visits, case managers described children in B2H families that had come to their attention, and it is clear that in many instances, extensive work has been done for children—see our Family Story, for example. It does not appear that children are systematically or routinely provided with mental health or other assessments, but rather that parents and/or case managers identify needs as they arise.

One way or another, as noted earlier in this report, when families talk about their experience with B2H, frequently they mention the efforts that have been made on behalf of their children as the most significant benefit of all.

*“My oldest daughter...she wasn’t living with me at the time and [B2H] helped walk me through getting her back home...and when she came home they provide a lot of assistance that I really needed...it was exciting...but I didn’t have any resources available, so she basically came back home with the clothes on her back...I had a 12-year-old girl that had nothing. [B2H] stepped up to the plate and made her feel more welcome than I was able to do alone.”*

*-B2H Head of Household*

## **6. Using flexible funding to fill gaps and address emergent needs.**

*“Bridges is so important because we can step in and maybe pay a month’s rent or something while they take care of some of this old stuff. With us there to back them up they feel like they can take a risk. \$1700 a year for these families—the return is HUGE.”*

*-B2H Case manager*

B2H case managers and supervisors uniformly acknowledge the benefit of having flexible dollars available to address emergent needs, prevent eviction, overcome barriers as families progress towards education and/or employment, prevent eviction, or meet the needs of children. During site visits, some case managers emphasized ‘preventing eviction’; others talked about ‘getting a client’s plan unstuck’ by providing transportation for a job or job searching; others mentioned ‘filling in budget gaps’ when families have trouble making ends meet.

The use of flex funds varies depending on other resources available in the county. In Multnomah County, for example, Children's Investment Fund dollars are available to pay for childcare or to meet other needs of children who reside in Portland thus B2H flexible funds can be used to meet other needs. In other counties, providers may be tapping into resources that do not appear in our data.

**Promising Practice:** *Human Solutions uses flexible funds creatively to encourage families who are seeking to resolve old debts or past due bills that may affect their chances of employment and/or housing. HS uses flex funds to encourage and support heads of households by matching what the client saves towards payment.*

Overall, close to \$46,000 in B2H flexible funds had been distributed by the end of December 2008 for 321 expenditures across the four counties. Most of the funds were spent in Multnomah County (\$31,600) where there are three separate providers and the largest number of families.

Clackamas and Washington Counties, where B2H rolled out later and where fewer families have been enrolled, spent \$12,000 and \$1500 respectively, while Clark County had spent \$900.

*"... [my son] wants to learn how to play guitar. So [case manager] ...going through some books, finding some places for him to go, so she's willing to help me get those paid for and get him into some classes."*

*-B2H Head of Household*

Both in terms of dollar amounts and number of expenditures, the greatest use of flexible funds has been for the following purposes:

- Housing stability (rent, security deposit, moving costs)
- Utility bills (power, water, telephone, etc.)
- Transportation (bus passes, gasoline, car repairs)
- Household furnishings and supplies

Additional funds have been spent on fees/documentation (e.g., driver's license fees; replacement social security cards), employment needs (e.g., appropriate clothing), and to address health issues (including costs of medications and exams).

B2H budgets allot \$1700 per family available in total flexible funds, to be spent on family needs at the discretion of the provider. In actuality, providers have been more cautious, with the range and average of expenditures per family as follows:

**Flex Fund Use by Providers<sup>25</sup>**

Provider*	Number of families receiving flex funds	Minimum total expenditure per family	Maximum total expenditure	Average total expenditure per family
Central City Concern Multnomah County (17 families)	14	\$50	\$2810	\$739
Human Solutions Multnomah County (53 families)	38	\$25	\$1283	\$370
Impact Northwest Multnomah County (31 families)	24	\$20	\$913	\$282
Clackamas County (14 families)	8	\$54	\$2376	\$1518
Washington County (15 families)	10	\$15	\$511	\$151
Share ASPIRE Clark County (32 families)	3	\$232	\$392	\$299

\*Data on the number of families is based on data entered in HMIS as of mid-November 2008.

For children residing in Portland, B2H providers have access to additional resources through the Children’s Investment Fund, which contributed a total of \$500,000 to Bridges to Housing to provide childcare or address other needs of children. In total, nearly \$84,000 of CHIF funds have been expended by B2H providers in Multnomah County to date, the largest amounts for:

- Day care                               \$42,630
- Other child needs               \$22,586 (diapers, stroller, car seat, clothing)
- Educational needs               \$8,625 (school supplies, school clothes)
- Child enrichment               \$6,000 (summer camp, zoo pass, museum pass, etc.)

Impact Northwest has made 216 expenditures with CHIF funds; Human Solutions has made 76; and Central City Concern (serving fewer families) has made 75.

<sup>25</sup> Flex fund use reported here is based on data submitted to NPF through December 31, 2008.

## 7. Coordinating with other service systems.

Many B2H families are involved with multiple systems when they enter the program, often including TANF and the Department of Human Services (DHS) child welfare. At the point of enrollment, extensive services or supports may already be in place and may not be captured in our data. At a minimum, families are receiving services or referrals for services to:

- Mental health care/counseling 42%
- Domestic violence services 35%
- Benefits assistance 35%
- Employment services 33%
- Parenting skills and supports 32%
- Substance abuse services 28%

And for children:

- Childcare 40%
- Recreational/Arts activities 33%
- Mental health care 27%
- HeadStart 25%

Coordination with these other service providers varies, depending on the jurisdiction and the relationships between providers and other service systems. In some jurisdictions (Washington County, for example) DHS and B2H work very closely together and there is little difficulty in coordinating services or resources. In other larger contexts (Multnomah County, for example) it is more difficult to bring all the service providers together to ensure seamless coordinated services.

During site visits we heard a range of experiences. Some B2H case managers said they took responsibility for coordinating team meetings for the families they work with. Others indicated they were an integral part of family decision meetings with DHS and other service systems or attended IEP meetings to advocate for families. However, some case managers said they struggled to make any contact at all with self-sufficiency or child protective service workers. Overall, it appears there has been some progress in addressing service coordination issues but many challenges still exist (especially in Multnomah County) in moving towards a single plan of care for children and families in B2H.

**Promising Practice:** *Impact Northwest is addressing the service coordination issue directly with DHS. A memorandum of understanding is now in place that provides a point person in DHS who will be responsible for facilitating access and communication for B2H case managers from Impact Northwest.*

*“They have a lot of stress to gather all of the plans they have from the different agencies. I bring the plans together and we figure out what the goals are. When they notice that they have accomplished one small thing it gives them something to feel good about. And slowly, slowly they can accomplish other things... We need to celebrate the small successes.”*

*-B2H Case Manager*

All of the case managers we spoke with, however, indicated that they were tracking service requirements for their B2H families and working with them to minimize the challenges of meeting the requirements of multiple providers. Moreover, many families reported moving forward with the help of their case manager.

**Continuing needs for services and supports.** Case managers and families alike name mental health care as the single biggest need among families that are struggling in B2H. As noted earlier in this report, mental illness can seriously jeopardize a family’s ability to be successful in housing and may severely restrict the prospects for family stability, employment and other key outcomes as well. Depending on the jurisdiction, access to mental health services may be good or very poor, but even where services are available, it is challenging to provide enough support for families to be able to benefit. Likewise, substance abuse continues to challenge many families; relapse and illegal drug use or trafficking have resulted in evictions/terminations from the program.

**Promising Practice:** A case manager at Share ASPIRE notices families in B2H that have no experience being a family and don’t know how to enjoy being together. She looks for events and activities they can do together in the community.

**Promising Practice:** Human Solutions has hired two substance abuse specialists to work on site assisting case managers and families with the very challenging issues that are associated with drug/alcohol dependence. Getting immediate help to families can make the difference.

Families also struggle with parenting issues, particularly if they have adolescent children whose experience of trauma has resulted in mental health and behavioral challenges. Moreover, some of these families have very little positive history to build on when they enter the program and need extra support to strengthen relationships among family members.

And finally, the needs are extensive for more effective services and supports, as well as increased opportunities, to give families a better chance for employment in living wage jobs.

## **VIII. Discussion**

Bridges to Housing has continued to enroll high-need families with a history of high resource use. As enrollments have increased, there has been a trend towards enrolling fewer families who are affected by mental illness and/or substance abuse. However, the prevalence of these and other special needs in the B2H population is still high, and B2H families enter the program with many challenges to their stability and self-sufficiency.

This Year-End report for 2008 suggests that positive outcomes found at six months after enrollment have been maintained for most families who remained housed in B2H for 12 months. Families have remained stable in their housing and safer from family violence, child maltreatment, and the need for foster care. Children in B2H families are likewise more stable in childcare and education settings and more likely to have primary health and dental health care providers. Many have been provided services and supports to address mental and behavioral challenges, and flexible funds have been used to enhance the social, learning, and recreational experiences for a number of children in B2H.

Modest gains have been made in the level of employment among B2H families, and more families are participating in job search or job readiness programs. However, there is a critical need for more and better education and employment training opportunities as well as living wage jobs that would allow B2H families to support themselves. These are important challenges to be addressed by the broader cross-system collaboration that is needed to secure brighter futures for high-need homeless families. Similarly, the use of higher cost urgent and emergency medical care will not decrease unless families have access to primary health care providers when an acute health need arises.

Retention in B2H has not been as high as initially anticipated, with more than a third of the families exiting prior to 12 months. Some of these exits were voluntary and reflect positive outcomes for the families. In other cases, however, families were not able to be successful in B2H and left as a result of eviction or termination from the program. Although a number of factors may have contributed to these early exits, it is likely that the bulk of these families needed a different or higher level of service than B2H provides. The higher incidence of mental illness among the group that were not successful also points to the need for more and better mental health services than are currently available for this population.

B2H families are living in a wide range of housing sites that vary in size, community, design, amenities, and availability of resident service programs to support tenants. Site visits to B2H providers, combined with information gathered through interviews, highlighted consistencies in practice across jurisdictions/providers as well as variations, especially in the degree of structure in assessment, service planning, and case management practices. Certain practices are emerging that may prove especially promising in helping families to move forward and/or in contributing to cross-system collaboration.

In sum, B2H is one element in what could be a seamless and comprehensive continuum of services for homeless families in the four-county region. For many high-need families, B2H has been of great benefit. However, two years of case management services—even

combined with permanent housing—may not be enough time to help some high need families to secure a better future. Moreover, not all families referred to B2H have been able to benefit. Some have exited early, most likely because the level and/or nature of services were not sufficient to help them stabilize. As additional data become available, it will be important to consider again the relationship between the level and type of service available in the region relative to the challenges that families present.

Those for whom B2H has been the right model are grateful to be housed and express deep appreciation for the help they and their children have received.

*“...This program is awesome...I don’t know where our family would be without it.”*

*-B2H Head of Household*

*“When you’ve got kids and there’s no program to help you, then you don’t get help. You get put on waiting lists that are two or three years out. So, [B2H] is a godsend...really.”*

*-B2H Head of Household*

## **APPENDIX**





**Bridges to Housing Program Referral Form**  
*Assessment Criteria*

Name: \_\_\_\_\_ Date emailed: \_\_\_\_\_ Date fax'd: \_\_\_\_\_  
 Screening date: \_\_\_\_\_ Screened by (name of program or agency): \_\_\_\_\_

**Bridges to Housing Homeless Family High Resource Users—Assessment Criteria**

Homeless Family High Resource Users: Family is defined as a parent(s) or guardian with one or more children. High Resource Usage is based on any family member's involvement with multiple categories listed below with a 12-month period unless otherwise specified.

**Rating Chart**

**Total Possible Points 30:**  
 8 pts = High Resource user  
 10 pts = Very High Resource user  
 One or more qualifying conditions in each category equal the # of designated points in each category.

**Substance Abuse—Treatment within PAST 12 Months (4 points)**

- Inpatient Treatment Program
- Intensive Outpatient
- Detox Services

Total Points: \_\_\_\_\_

**Mental Health—Treatment or Services with PAST 12 Months (4 points)**

- Residential Psychiatric Facility
- Hospital Psychiatric Ward
- Intensive Outpatient Program

Total Points: \_\_\_\_\_

**Foster Care State or Tribal Involvement within PAST 12 months (4 points)**

- One or more children in foster care pending reunification
- Parental rights or custodial or non-custodial parent terminated

Total Points: \_\_\_\_\_

**Corrections—System Involvement within PAST 12 Months (4 points)**

- Prison (or history of 3 or more prison stays during life)
- Jail for more than 3 months or multiple jails stays / arrests
- In work-release or on parole for felony conviction (not first conviction)
- Current criminal case as primary defendant / awaiting sentencing (felony only)

Total Points: \_\_\_\_\_

**Physical and Cognitive Health Issues within the PAST 12 Months (4 points)**

- Enrolled in State Medically Needy Program in past 12 months
- Resident at Residential Care Facility in past 12 months
- Use of emergency room three or more times in the past 12 months
- Last state of terminal health condition (documented less than 4 years life expectancy)
- Qualifying developmental disability / Cognitive Disability / Head Injury (qualifying means receiving government services due to disability in the past 12 months)
- Hospital stay in the past 12 months
- Serious health condition or injury that requires in home care in the past 12 months
- Serious, chronic condition that requires on-going medical care in the past 12 months

Total Points: \_\_\_\_\_

**Domestic Violence / Victim's Services / Issues (4 points)**

- Petition for restraining or stalking order or incident of violation of restraining order with police response in the last 3 months
- Criminal case as primary victim / complaint (not limited to felonies)
- Has received Temporary Assistance-Domestic Violence Services within the last 12 months

Total Points: \_\_\_\_\_

**Homeless / Housing System within the PAST 12 Months (4 points)**

- Two stays in shelter / transitional housing and/or three episodes of homelessness in the past 12 months
- Recipient of subsidized housing for more than 24 months
- Has accessed transitional housing within the past 12 months

Total Points: \_\_\_\_\_

**Mainstream Resources Involvement within the PAST 18 Months (2 points)**

- Has received DHS childcare subsidy for more than 12 months consecutively
- Has received TANF assistance for more than 12 months consecutively
- Has received OHP or other free health care for more than 12 months consecutively

Total Points: \_\_\_\_\_

**GRAND TOTAL POINTS:** \_\_\_\_\_

## **B2H 12 Month Interview Guide For Current Clients**

1. What have things been like for your family in the past six months?
  - a. What kinds of changes are happening?
  - b. Do you think things are getting better? In what way? What's not going so well?
2. Has your Bridges to Housing case manager referred you to any services in the past six months? (i.e. medical, dental, mental health, employment, budgeting, ready to rent, parenting classes)
  - a. Did you go to any of these services? If so, were they helpful? In what way? If you did not use these services, why not?
  - b. Were there any services you needed but did not get?
3. Have your children gotten any services or particular attention in the program?
  - a. Were those services helpful? In what way?
  - b. Have there been things your children needed that they didn't get?
4. How are things going with your case manager?
  - a. How often have you been meeting? What do you usually talk about in those meetings?
  - b. Are you working on goals that were set up in your individual plan?
5. Do you feel there are particular challenges or problems in your family that have become barriers to staying in housing?
  - a. Any specific issues that have come up over and over again?
  - b. Anything you have needed or wanted help with?
6. How do you feel about this community?
  - a. Have you had an opportunity to get to know other residents?
  - b. Have there been any community meetings? If not, would you attend if there were meetings on site?
  - c. Have there been any challenges with living in this community? If so, what were they?
  - d. Is there a service you wish were available on site for residents?
7. How do you see things going in the future?
  - a. What are you hopeful about? What are you less hopeful about?
  - b. Do you have a timeline and plan for leaving this program?
8. What could B2H do to help you more with your goals?



## **BE PART OF AN IMPORTANT PROJECT**

### **Housing Evaluation**

The purpose of this evaluation study is to find out how well your housing program meets the needs of families and children. The goal is to improve housing and support services to families that have experienced homelessness. A team of researchers from Portland State University were hired to conduct the evaluation study.

#### **What Will I Have To Do?**

If you decide to take part in this project, we will ask you to provide information for a survey. We will also contact you in 6 months and 12 months and ask you to provide information again so we can keep track of any changes you or your family has experienced. The survey will take about 20 minutes to complete and will have questions about the following topics:

- Your family's experience being homeless
- Challenges your family has faced
- Services you and your children have received

#### **Are There Any Risks?**

Sharing information about your family's experience is personal and can sometimes feel uncomfortable. You do not have to take part in this study. If you do agree to participate and later decide you don't want to, you can change your mind at any time. Also, if you don't feel comfortable answering a question on the survey, you can skip that question.

#### **What Will I Get In Return?**

- \$15 gift certificate to Fred Meyers  
You will receive a \$15 gift certificate for each follow-up survey you complete. The money is our way of saying Thank You for Your Time.
- Knowing you are helping others  
Many people feel good about helping others. We can learn so much from you to improve housing programs to better help your family as well as families in the future.

#### **What Are You Doing To Protect Me?**

Your privacy is very important to us. We are doing many things to protect you:

- We won't tell anyone if you are taking part in this study or not.
- You will answer the questions alone, with your case manager, or with a researcher from Portland State University. What you tell us will stay private.
- Your name and what you tell us in the interview will be kept private to the extent allowed by the law. (By 'kept private' we mean that the names of people who take

part in the study will not be given to anyone else. And it means that we will only reveal what you say in a way that no one could ever guess or know who said it.) The only information that is not protected is if you tell us about threats or incidents of injury to any child that does not seem to have been an accident, information from a study participant that causes researchers to think a person is in immediate danger of hurting themselves or someone else, and medical information in cases of emergency.

- Your name and any other personal information, which we need in order to keep track of who we talk to, will be kept in a locked file cabinet or in a locked file on a computer so that no other staff can access it. For example, this form (which has your name on it) will be kept in a locked file cabinet.
- When we write or talk about what we learned in this study, we will leave things out so that no one will be able to tell who we are talking about.

**Any Questions?**

If you have any questions about this study, this form, or the interview, you can talk to your interviewer or the person in charge of the project. Diane Yatchmenoff 503-725-4518. You can also contact the chair of the Human Subject Committee of Portland State University about your rights as a research participant (someone who takes part in a study). Office hours are 9:00 a.m.—5:00 p.m., Monday through Friday. The office building is located at Portland State University, Unitus Building, 6<sup>th</sup> floor, 2121 S.W. 4<sup>th</sup> Avenue, Portland, Oregon, 97201. The telephone number is 503-725-4288/ 1-877-480-4400, or send an email to [hsrrc@lists.pdx.edu](mailto:hsrrc@lists.pdx.edu).

**If I Sign, What Does It Mean?**

- You have read and understand what this form means.
- You are willing to take part in this study by talking to us or your case manager in an interview.
- You know that you do not have to take part in this study and even if you sign you can change your mind and stop at any time. No problem.
- You know that taking part in this study will not change or affect any of the services you get. If you take part in this study or not, you will still be treated the same.
- You will get a copy of this form to keep for yourself.

---

Participant Signature                      Date                      Participant name, printed

---

Interviewer Signature                      Date                      Interviewer name, printed

## Family Information

### Head of Household Information:

#### 1. Gender

- |  |  |
|--|--|
| <input type="checkbox"/> <sub>1</sub> Male             | <input type="checkbox"/> <sub>4</sub> Transgender Female |
| <input type="checkbox"/> <sub>2</sub> Female           | <input type="checkbox"/> <sub>5</sub> Transgender        |
| <input type="checkbox"/> <sub>3</sub> Transgender Male | <input type="checkbox"/> <sub>6</sub> Unknown            |

#### 2. Date of birth (month/date/year)         /      /

#### 3. Race

- |  |   |
|--|---|
| <input type="checkbox"/> <sub>1</sub> American Indian/Alaskan Native | <input type="checkbox"/> <sub>4</sub> White       |
| <input type="checkbox"/> <sub>2</sub> Asian                          | <input type="checkbox"/> <sub>5</sub> Multi-Race  |
| <input type="checkbox"/> <sub>3</sub> Black/African American         | <input type="checkbox"/> <sub>6</sub> Other _____ |

#### 4. Ethnicity

- |   |   |
|---|---|
| <input type="checkbox"/> <sub>1</sub> Hispanic/Latino | <input type="checkbox"/> <sub>2</sub> Not Hispanic/Latino |
|---|---|

#### 5. Household type

- |  |  |
|--|--|
| <input type="checkbox"/> <sub>1</sub> Couple with no children  | <input type="checkbox"/> <sub>5</sub> Male single parent         |
| <input type="checkbox"/> <sub>2</sub> Female single parent     | <input type="checkbox"/> <sub>6</sub> Non-custodial caregiver(s) |
| <input type="checkbox"/> <sub>3</sub> Foster parent(s)         | <input type="checkbox"/> <sub>7</sub> Other single individual    |
| <input type="checkbox"/> <sub>4</sub> Grandparent(s) and child | <input type="checkbox"/> <sub>8</sub> Two-parent household       |

#### 6. Special needs/disabilities at time of entry (check all that apply)

- |   |  |
|---|--|
| <input type="checkbox"/> <sub>1</sub> Alcohol abuse       | <input type="checkbox"/> <sub>1</sub> Physical/medical         |
| <input type="checkbox"/> <sub>1</sub> Drug abuse          | <input type="checkbox"/> <sub>1</sub> Physical/mobility limits |
| <input type="checkbox"/> <sub>1</sub> Mental illness      | <input type="checkbox"/> <sub>1</sub> Cognitive impairment     |
| <input type="checkbox"/> <sub>1</sub> Dual diagnosis      | <input type="checkbox"/> <sub>1</sub> Hearing impaired         |
| <input type="checkbox"/> <sub>1</sub> Developmental delay | <input type="checkbox"/> <sub>1</sub> Vision impaired          |
| <input type="checkbox"/> <sub>1</sub> HIV/Aids            | <input type="checkbox"/> <sub>1</sub> Other _____              |

#### 7. Primary cause of homelessness for this episode (check one)

- |  |   |
|--|---|
| <input type="checkbox"/> <sub>1</sub> Medical condition      | <input type="checkbox"/> <sub>11</sub> Family crisis                  |
| <input type="checkbox"/> <sub>2</sub> Criminal Activity      | <input type="checkbox"/> <sub>12</sub> Underemployment/low income     |
| <input type="checkbox"/> <sub>3</sub> Utility shutoff        | <input type="checkbox"/> <sub>13</sub> Release from institution       |
| <input type="checkbox"/> <sub>4</sub> Substandard housing    | <input type="checkbox"/> <sub>14</sub> Loss of public assistance      |
| <input type="checkbox"/> <sub>5</sub> Mortgage foreclosure   | <input type="checkbox"/> <sub>15</sub> Loss of job                    |
| <input type="checkbox"/> <sub>6</sub> Loss of transportation | <input type="checkbox"/> <sub>16</sub> Eviction/displacement          |
| <input type="checkbox"/> <sub>7</sub> Loss of child care     | <input type="checkbox"/> <sub>17</sub> Mental health                  |
| <input type="checkbox"/> <sub>8</sub> Health/safety          | <input type="checkbox"/> <sub>18</sub> Substance abuse: drugs/alcohol |
| <input type="checkbox"/> <sub>9</sub> Transient              | <input type="checkbox"/> <sub>19</sub> Runaway youth                  |
| <input type="checkbox"/> <sub>10</sub> Domestic violence     | <input type="checkbox"/> <sub>20</sub> New arrival                    |

What are some of the other reasons why this episode of homelessness happened to your family? \_\_\_\_\_

**Focus Child Information:**

Please collect the following information on the youngest school-aged child or the child that is closest to school age:

**8. Gender**

- <sub>1</sub> Male
- <sub>2</sub> Female
- <sub>3</sub> Transgender Male
- <sub>4</sub> Transgender Female
- <sub>5</sub> Transgender
- <sub>6</sub> Unknown

**9. Date of Birth (month/date/year)    /    /**

**10. Race**

- <sub>1</sub> American Indian/Alaskan Native
- <sub>2</sub> Asian
- <sub>3</sub> Black/African American
- <sub>4</sub> White
- <sub>5</sub> Multi-Race
- <sub>6</sub> Other \_\_\_\_\_

**11. Ethnicity**

- <sub>1</sub> Hispanic/Latino
- <sub>2</sub> Not Hispanic/Latino

**12. Household type**

- <sub>1</sub> Couple with no children
- <sub>2</sub> Female single parent
- <sub>3</sub> Foster parent(s)
- <sub>4</sub> Grandparent(s) and child
- <sub>5</sub> Male single parent
- <sub>6</sub> Non-custodial caregiver(s)
- <sub>7</sub> Other single individual
- <sub>8</sub> Two-parent household

**13. Special needs/disabilities at time of entry (check all that apply)**

- <sub>1</sub> Alcohol abuse
- <sub>1</sub> Drug abuse
- <sub>1</sub> Mental illness
- <sub>1</sub> Dual diagnosis
- <sub>1</sub> Developmental delay
- <sub>1</sub> HIV/Aids
- <sub>1</sub> Physical/medical
- <sub>1</sub> Physical/mobility limits
- <sub>1</sub> Cognitive impairment
- <sub>1</sub> Hearing impaired
- <sub>1</sub> Vision impaired
- <sub>1</sub> Other \_\_\_\_\_

## Family Survey

### History of Homelessness

14. Number of episodes your family has ever been homeless? (An episode is a period of time when you didn't have safe, stable, or permanent housing). \_\_\_\_\_ #
15. Number of homeless episodes as a family in the last *two years*? \_\_\_\_\_ #
16. What has been the longest episode of homelessness for your family? \_\_\_\_\_
17. How many times has your family moved in the past *two years*? \_\_\_\_\_ #
18. How many changes in childcare or education settings did your child have to make in the last *two years* because your family had to move? \_\_\_\_\_ #
19. Have you ever had to separate your family due to homelessness (split up, send children to live elsewhere, etc.)?  Yes  No
20. Did you have an open DHS child welfare case (when you entered this housing site, eg. Arbor Glen, Richmond Place)?  Yes  No
21. Do you have a child currently in foster care?  Yes  No

### Income/Financial Resources

22. Are you currently employed?  Yes  No
23. If you are working, how many hours per week do you work? \_\_\_\_\_
24. Are you enrolled in a Job Search or Job Training Program?  Yes  No
25. Are you currently in school or a degree program?  Yes  No
26. What are your current sources of income or benefits (check all that apply)
- |   |   |
|---|---|
| <input type="checkbox"/> Alimony/spousal support      | <input type="checkbox"/> Social security          |
| <input type="checkbox"/> Child support                | <input type="checkbox"/> SSDI                     |
| <input type="checkbox"/> Earned income                | <input type="checkbox"/> SSI                      |
| <input type="checkbox"/> Food stamps                  | <input type="checkbox"/> TANF                     |
| <input type="checkbox"/> Medicaid/Oregon Health Plan  | <input type="checkbox"/> Unemployment Insurance   |
| <input type="checkbox"/> No financial resources       | <input type="checkbox"/> VA medical services      |
| <input type="checkbox"/> Pension/former job           | <input type="checkbox"/> Veteran's disability pay |
| <input type="checkbox"/> Private disability Insurance | <input type="checkbox"/> Veteran's pension        |
| <input type="checkbox"/> SCHIP                        | <input type="checkbox"/> WIC                      |
| <input type="checkbox"/> Self employment wages        | <input type="checkbox"/> Worker's Compensation    |
| <input type="checkbox"/> Other _____                  |   |

27. In the last 30 days what was your total household income? \_\_\_\_\_

**Housing Stability/Family Health and Safety**

28. Is your family in permanent housing right now? <sub>1</sub> Yes <sub>0</sub> No

*In the last six months...*

29. How many times have you moved? \_\_\_\_\_ #

30. How many times have you or your partner been to the Emergency Room? \_\_\_\_\_ #

31. How many times have any of your children been to the Emergency Room? \_\_\_\_\_ #

32. Has anyone in your family been arrested? <sub>1</sub> Yes <sub>0</sub> No

33. Have you experienced domestic violence? <sub>1</sub> Yes <sub>0</sub> No

34. Has your family been referred to DHS/Child Welfare? <sub>1</sub> Yes <sub>0</sub> No

35. Have any of your children been placed in foster care? <sub>1</sub> Yes <sub>0</sub> No

36. Have any of your children been returned to you from foster care? <sub>1</sub> Yes <sub>0</sub> No

37. Have there been any other changes to your family? <sub>1</sub> Yes <sub>0</sub> No

If yes, please explain. \_\_\_\_\_  
\_\_\_\_\_  
\_\_\_\_\_

**Services (Adult Head of Household)**

*Are you currently receiving...*

38. Substance abuse services? (please check one)

- |   |  |
|---|--|
| <input type="checkbox"/> <sub>1</sub> yes   | <input type="checkbox"/> <sub>3</sub> I successfully completed this service/no longer need it. |
| <input type="checkbox"/> <sub>2</sub> Not at this time, but I may want/need this service later. | <input type="checkbox"/> <sub>4</sub> I don't need this service                                |

39. Domestic violence services? (please check one)

- |   |  |
|---|--|
| <input type="checkbox"/> <sub>1</sub> yes   | <input type="checkbox"/> <sub>3</sub> I successfully completed this service/no longer need it. |
| <input type="checkbox"/> <sub>2</sub> Not at this time, but I may want/need this service later. | <input type="checkbox"/> <sub>4</sub> I don't need this service                                |

40. Mental health care or counseling? (please check one)

- |   |  |
|---|--|
| <input type="checkbox"/> <sub>1</sub> yes   | <input type="checkbox"/> <sub>3</sub> I successfully completed this service/no longer need it. |
| <input type="checkbox"/> <sub>2</sub> Not at this time, but I may want/need this service later. | <input type="checkbox"/> <sub>4</sub> I don't need this service                                |

41. Services that help you deal with trauma? (please check one)

- |   |  |
|---|--|
| <input type="checkbox"/> <sub>1</sub> yes   | <input type="checkbox"/> <sub>3</sub> I successfully completed this service/no longer need it. |
| <input type="checkbox"/> <sub>2</sub> Not at this time, but I may want/need this service later. | <input type="checkbox"/> <sub>4</sub> I don't need this service                                |

*Are you currently receiving...*

42. Health care? (please check one)

- |   |  |
|---|--|
| <input type="checkbox"/> <sub>1</sub> yes   | <input type="checkbox"/> <sub>3</sub> I successfully completed this service/no longer need it. |
| <input type="checkbox"/> <sub>2</sub> Not at this time, but I may want/need this service later. | <input type="checkbox"/> <sub>4</sub> I don't need this service                                |

43. Vision care? (please check one)

- |   |  |
|---|--|
| <input type="checkbox"/> <sub>1</sub> yes   | <input type="checkbox"/> <sub>3</sub> I successfully completed this service/no longer need it. |
| <input type="checkbox"/> <sub>2</sub> Not at this time, but I may want/need this service later. | <input type="checkbox"/> <sub>4</sub> I don't need this service                                |

44. Dental care? (please check one)

- |   |  |
|---|--|
| <input type="checkbox"/> <sub>1</sub> yes   | <input type="checkbox"/> <sub>3</sub> I successfully completed this service/no longer need it. |
| <input type="checkbox"/> <sub>2</sub> Not at this time, but I may want/need this service later. | <input type="checkbox"/> <sub>4</sub> I don't need this service                                |

45. Employment services? (please check one)

- |   |  |
|---|--|
| <input type="checkbox"/> <sub>1</sub> yes   | <input type="checkbox"/> <sub>3</sub> I successfully completed this service/no longer need it. |
| <input type="checkbox"/> <sub>2</sub> Not at this time, but I may want/need this service later. | <input type="checkbox"/> <sub>4</sub> I don't need this service                                |

46. Education programs? (please check one)

- |   |  |
|---|--|
| <input type="checkbox"/> <sub>1</sub> yes   | <input type="checkbox"/> <sub>3</sub> I successfully completed this service/no longer need it. |
| <input type="checkbox"/> <sub>2</sub> Not at this time, but I may want/need this service later. | <input type="checkbox"/> <sub>4</sub> I don't need this service                                |

47. Benefits assistance (WIC, TANF, etc.)? (please check one)

- |   |  |
|---|--|
| <input type="checkbox"/> <sub>1</sub> yes   | <input type="checkbox"/> <sub>3</sub> I successfully completed this service/no longer need it. |
| <input type="checkbox"/> <sub>2</sub> Not at this time, but I may want/need this service later. | <input type="checkbox"/> <sub>4</sub> I don't need this service                                |

48. Transportation services? (please check one)

- |   |  |
|---|--|
| <input type="checkbox"/> <sub>1</sub> yes   | <input type="checkbox"/> <sub>3</sub> I successfully completed this service/no longer need it. |
| <input type="checkbox"/> <sub>2</sub> Not at this time, but I may want/need this service later. | <input type="checkbox"/> <sub>4</sub> I don't need this service                                |

49. Conflict resolution classes? (please check one)

- |   |  |
|---|--|
| <input type="checkbox"/> <sub>1</sub> yes   | <input type="checkbox"/> <sub>3</sub> I successfully completed this service/no longer need it. |
| <input type="checkbox"/> <sub>2</sub> Not at this time, but I may want/need this service later. | <input type="checkbox"/> <sub>4</sub> I don't need this service                                |

50. Legal education/information services? (please check one)

- |   |  |
|---|--|
| <input type="checkbox"/> <sub>1</sub> yes   | <input type="checkbox"/> <sub>3</sub> I successfully completed this service/no longer need it. |
| <input type="checkbox"/> <sub>2</sub> Not at this time, but I may want/need this service later. | <input type="checkbox"/> <sub>4</sub> I don't need this service                                |

51. Financial/Credit counseling services? (please check one)

- |   |  |
|---|--|
| <input type="checkbox"/> <sub>1</sub> yes   | <input type="checkbox"/> <sub>3</sub> I successfully completed this service/no longer need it. |
| <input type="checkbox"/> <sub>2</sub> Not at this time, but I may want/need this service later. | <input type="checkbox"/> <sub>4</sub> I don't need this service                                |

52. Parenting skills/support classes or counseling? (please check one)

- |   |  |
|---|--|
| <input type="checkbox"/> <sub>1</sub> yes   | <input type="checkbox"/> <sub>3</sub> I successfully completed this service/no longer need it. |
| <input type="checkbox"/> <sub>2</sub> Not at this time, but I may want/need this service later. | <input type="checkbox"/> <sub>4</sub> I don't need this service                                |

53. Other life skills training (cooking, nutrition, cleaning, etc.)? (please check one)

- |   |  |
|---|--|
| <input type="checkbox"/> <sub>1</sub> yes   | <input type="checkbox"/> <sub>3</sub> I successfully completed this service/no longer need it. |
| <input type="checkbox"/> <sub>2</sub> Not at this time, but I may want/need this service later. | <input type="checkbox"/> <sub>4</sub> I don't need this service                                |

54. HIV/AIDS related services or counseling? (please check one)

- |   |  |
|---|--|
| <input type="checkbox"/> <sub>1</sub> yes   | <input type="checkbox"/> <sub>3</sub> I successfully completed this service/no longer need it. |
| <input type="checkbox"/> <sub>2</sub> Not at this time, but I may want/need this service later. | <input type="checkbox"/> <sub>4</sub> I don't need this service                                |

Comments \_\_\_\_\_  
\_\_\_\_\_  
\_\_\_\_\_

### Child Services

**(We want to know information on your youngest school-aged child or your child that is closest to school age):**

*Is your child currently receiving...*

55. Childcare services? (please check one)

- |   |  |
|---|--|
| <input type="checkbox"/> <sub>1</sub> yes   | <input type="checkbox"/> <sub>3</sub> I successfully completed this service/no longer need it. |
| <input type="checkbox"/> <sub>2</sub> Not at this time, but I may want/need this service later. | <input type="checkbox"/> <sub>4</sub> I don't need this service                                |

56. Headstart services? (please check one)

- <sub>1</sub> yes  
<sub>2</sub> Not at this time, but I may want/need this service later.  
<sub>3</sub> I successfully completed this service/no longer need it.  
<sub>4</sub> I don't need this service

57. Early Intervention for Young Children (e.g. Special education or In-home services)? (please check one)

- <sub>1</sub> yes  
<sub>2</sub> Not at this time, but I may want/need this service later.  
<sub>3</sub> I successfully completed this service/no longer need it.  
<sub>4</sub> I don't need this service

58. Tutoring services? (please check one)

- <sub>1</sub> yes  
<sub>2</sub> Not at this time, but I may want/need this service later.  
<sub>3</sub> I successfully completed this service/no longer need it.  
<sub>4</sub> I don't need this service

59. Child Medical Services? (please check one)

- <sub>1</sub> yes  
<sub>2</sub> Not at this time, but I may want/need this service later.  
<sub>3</sub> I successfully completed this service/no longer need it.  
<sub>4</sub> I don't need this service

60. Dental care? (please check one)

- <sub>1</sub> yes  
<sub>2</sub> Not at this time, but I may want/need this service later.  
<sub>3</sub> I successfully completed this service/no longer need it.  
<sub>4</sub> I don't need this service

61. Vision care? (please check one)

- <sub>1</sub> yes  
<sub>2</sub> Not at this time, but I may want/need this service later.  
<sub>3</sub> I successfully completed this service/no longer need it.  
<sub>4</sub> I don't need this service

62. Mental health care or counseling? (please check one)

- <sub>1</sub> yes  
<sub>2</sub> Not at this time, but I may want/need this service later.  
<sub>3</sub> I successfully completed this service/no longer need it.  
<sub>4</sub> I don't need this service

63. Individualized Education Plan (IEP)/Section 504 Plan? (please check one)

- <sub>1</sub> yes  
<sub>2</sub> Not at this time, but I may want/need this service later.  
<sub>3</sub> I successfully completed this service/no longer need it.  
<sub>4</sub> I don't need this service

64. Child developmental assessment/testing? (please check one)

- <sub>1</sub> yes  
<sub>2</sub> Not at this time, but I may want/need this service later.  
<sub>3</sub> I successfully completed this service/no longer need it.  
<sub>4</sub> I don't need this service

50. Services that help your child deal with trauma? (please check one)

- |   |  |
|---|--|
| <input type="checkbox"/> <sub>1</sub> yes   | <input type="checkbox"/> <sub>3</sub> I successfully completed this service/no longer need it. |
| <input type="checkbox"/> <sub>2</sub> Not at this time, but I may want/need this service later. | <input type="checkbox"/> <sub>4</sub> I don't need this service                                |

65. Substance abuse services? (please check one)

- |   |  |
|---|--|
| <input type="checkbox"/> <sub>1</sub> yes   | <input type="checkbox"/> <sub>3</sub> I successfully completed this service/no longer need it. |
| <input type="checkbox"/> <sub>2</sub> Not at this time, but I may want/need this service later. | <input type="checkbox"/> <sub>4</sub> I don't need this service                                |

66. Exercise, Art, Music, or other types of activities? (please check one)

- |   |  |
|---|--|
| <input type="checkbox"/> <sub>1</sub> yes   | <input type="checkbox"/> <sub>3</sub> I successfully completed this service/no longer need it. |
| <input type="checkbox"/> <sub>2</sub> Not at this time, but I may want/need this service later. | <input type="checkbox"/> <sub>4</sub> I don't need this service                                |

67. Mentoring (such as Big Brothers/Big Sisters)? (please check one)

- |   |  |
|---|--|
| <input type="checkbox"/> <sub>1</sub> yes   | <input type="checkbox"/> <sub>3</sub> I successfully completed this service/no longer need it. |
| <input type="checkbox"/> <sub>2</sub> Not at this time, but I may want/need this service later. | <input type="checkbox"/> <sub>4</sub> I don't need this service                                |

68. Legal counseling or services for your child? (please check one)

- |   |  |
|---|--|
| <input type="checkbox"/> <sub>1</sub> yes   | <input type="checkbox"/> <sub>3</sub> I successfully completed this service/no longer need it. |
| <input type="checkbox"/> <sub>2</sub> Not at this time, but I may want/need this service later. | <input type="checkbox"/> <sub>4</sub> I don't need this service                                |

69. Alternative education? (please check one)

- |   |  |
|---|--|
| <input type="checkbox"/> <sub>1</sub> yes   | <input type="checkbox"/> <sub>3</sub> I successfully completed this service/no longer need it. |
| <input type="checkbox"/> <sub>2</sub> Not at this time, but I may want/need this service later. | <input type="checkbox"/> <sub>4</sub> I don't need this service                                |

70. Job training services? (please check one)

- |   |  |
|---|--|
| <input type="checkbox"/> <sub>1</sub> yes   | <input type="checkbox"/> <sub>3</sub> I successfully completed this service/no longer need it. |
| <input type="checkbox"/> <sub>2</sub> Not at this time, but I may want/need this service later. | <input type="checkbox"/> <sub>4</sub> I don't need this service                                |

Comments \_\_\_\_\_  
\_\_\_\_\_  
\_\_\_\_\_

**Child Well-being**

71. How many different childcare or education settings has your child attended in the last *six months*? \_\_\_\_\_

72. Do you feel your child is on track (meeting benchmarks) for her/his current grade?

<sub>1</sub> Yes <sub>0</sub> No

73. How often was your child usually absent from school/preschool in the last *six months* (please check one)?

- <sub>1</sub> Less than 1 day per month
- <sub>2</sub> About 1 day per month
- <sub>3</sub> About 1 day every two weeks
- <sub>4</sub> About 2 days per week
- <sub>5</sub> About 3 or more days per week
- <sub>6</sub> Not sure
- <sub>7</sub> Doesn't apply

74. Does your child have a regular health care provider? <sub>1</sub> Yes <sub>0</sub> No

75. Does your child have a regular dental care provider? <sub>1</sub> Yes <sub>0</sub> No

76. Has your child been in foster care in the past *six months*? <sub>1</sub> Yes <sub>0</sub> No

77. Does your child have a learning disability? <sub>1</sub> Yes <sub>0</sub> No

78. Does this child have social, emotional or behavioral concerns (e.g. ADHD, Serious Emotional Disturbance, etc.)?

<sub>1</sub> Yes <sub>0</sub> No

Comments \_\_\_\_\_  
\_\_\_\_\_  
\_\_\_\_\_

**Is there anything else you would like to add about your experience getting the services that you need?**

\_\_\_\_\_  
\_\_\_\_\_  
\_\_\_\_\_



**Bridges to Housing  
Site Visit Protocol**



## Bridges to Housing Program Implementation

In October and November 2008, NPF and members of the evaluation team from Portland State University will be compiling information and then visiting Bridges to Housing projects in all four counties. We will follow site visits with visits with each jurisdictional implementation team.

We intend that these site visits will give us more detailed knowledge of how Bridges to Housing is being implemented across the four counties. Our aim is not to find fault, but to be able to adequately and accurately describe what's happening and what the differences are between sites and jurisdictions.

For each project, we are interested in documenting:

1. General Information about the project, including:
  - a. Information about the provider, property owner, property manager, the number of units and the number of Bridges to Housing families on site.
  - b. Family turnover experience.
  - c. Permanent housing subsidy source information and duration of housing support for families.
  - d. Costs per family served.
  
2. Information about the referral process within each county, including:
  - a. Referral sources, and screening process, (Who refers families? Who conducts the screening?)
  - b. Referral process and any changes or fine tuning – prior or anticipated.
  - c. Is there a waitlist? If yes, how is it managed?
  
3. Information about intake and enrollment, including:
  - a. Initial contact with the family (who and how), coordination with referral source (or prior program), initial assessment, intake procedures, and use of assessment tools (how and when).
  - b. Information provided to the family about Bridges to Housing, and engagement process. What are the expectations of families?
  - c. Are families enrolled prior to receiving housing or only after a housing unit is secured?
  - d. What is the engagement process and how long does it take?

4. Information about case management, including:
  - a. Information about the initial outreach, expectations for family participation, service plan development, case file structure, comprehensive service planning (i.e, individual, family, children, life domains?), frequency of contact (expected frequency? Early vs. ongoing? Typical?), supervisory structure, coordination with other service providers.
  - b. Information about the Bridges to Housing “community.” (Peer to peer mentoring, do families know one another and identify as Bridges to Housing?)
  - c. Turnover/burnout of case managers
  - d. Support needs of case managers and/or supervisors
  - e. Use of flexible client funds?
  - f. Does the property have resident services? What and how much? Is there community space?
  
5. Information about handling problems, such as:
  - a. Rule and lease infractions, contracts
  - b. Tenant conflicts
  - c. Eviction Prevention services?
  - d. Standard processes and procedures for handling problems
  
6. Information about transitions for families, including:
  - a. Level of service over time
  - b. Graduation
  - c. Provision/arrangement of long-term supports/resources
  - d. Employment
  
7. Information about evaluation participation and obstacles
  - a. Participation in and progress with the comparison group.
  - b. Cost of following the comparison group.
  - c. Experiences with HMIS.
  
8. Protocol for filling units vacated before families have received two years of support. Agreement with evaluators on how these families are followed for evaluation purposes.
  
9. Housing provider experience
  - a. Unit damage or increased maintenance issues?

- b. Property management/case management communication experience
10. Miscellaneous questions
- a. Possible consumer representatives to participate with the Regional Steering Committee.

At the jurisdictional level, we would like to know:

1. Examples of systems change
2. Current development pipeline, and possible uses of development capital
3. Costs per family served
4. Protocol for filling vacant B2H units – plan for future funding or use of private B2H funds.
5. Relationship with DHS/DSHS
6. Communications plan and procedures within jurisdiction – briefing elected representatives, partner agencies.
7. Your hopes for any future allocation process.



**Bridges to Housing  
Housing Site Information by County**



<b>Clackamas County</b>					
	<b>Easton Ridge</b>	<b>Avalon House</b>	<b>River Glen</b>	<b>Willard Street Duplex</b>	<b>Scattered Site</b>
<b>B2H Timeline (Pre-Pilot, Pilot, Year 1)</b>	Pilot	Pilot	Pilot	Year 1	Pilot, Year 1
<b>Service Provider</b>	CCSS	CCSS	CCSS	CCSS	CCSS
<b>Housing Provider</b>	Housing Authority of Clackamas County	NHA	NHA	NHA	Various
<b>Property Management</b>	Quantam	The Inn	Guardian	NHA	Various
<b># of B2H Units?</b>	3	4	1	2	4
<b>Total Units?</b>	50	6	36	2	
<b>Amenities?</b>	-	Yes	Yes	Yes	
<b>Resident Services?</b>	-	-	-	No	
<b>Core</b>	-	-	-	-	
<b>Youth</b>	-	-	-	-	
<b>Asset Building</b>	-	-	-	-	
<b>Case Management FTE</b>	1.0	1.0	1.0	1.0	1.0
<b>Case Manager On-Site?</b>	No	No	No	No	No
<b>Permanent Housing Subsidy?</b>	See Below	See Below		Yes	
<b>Source(s) of subsidy</b>	Program Based Section 8, B2H Rent Subsidy, HACC Subsidy	LIRHF	B2H Rent Subsidy, LIHRF, Program Based Section 8, Section 236 HUD	Home Program	B2H Rent Subsidy, LIRF, Program Based Section 8
<b>Duration of subsid(ies)</b>	3 years - Permanent depending on source	3 months	3 Years - Permanent, Depending on source	4 Years	6 months, 3 years, Permanent, depending on source

**Clark County**

	<b>Fisher's Mill</b>	<b>Park Lane</b>	<b>Village Park</b>	<b>Maple Knoll</b>	<b>Covington Commons</b>	<b>Kauffman Town Homes</b>	<b>Aurora Place Apartments</b>
<b>B2H Timeline (Pre-Pilot, Pilot, Year 1)</b>	Pre-Pilot	Pre-Pilot	Pre-Pilot	Pilot, Year 1	Pilot	Pilot	Year 1
<b>Service Provider</b>	Share	Share	Share	Share	Share	Share	Share
<b>Housing Provider</b>	Vancouver Housing Authority	Vancouver Housing Authority	Vancouver Housing Authority	Vancouver Housing Authority	ACE Housing	YW Housing	YW Housing
<b>Property Management</b>	Key Properties	Key Properties	N/A	Key Properties	N/A	N/A	N/A
<b># of B2H Units?</b>	8	4	1	9	5	5	4
<b>Total Units?</b>	358	260	91	180	51	25	25
<b>Amenities?</b>	Yes	Yes	Yes	Yes	Yes	Yes	Yes
<b>Resident Services?</b>	No	-	-	-	Yes	-	-
<b>Core</b>	-	-	-	-	-	-	-
<b>Youth</b>	-	No	No	No	Yes	-	-
<b>Asset Building</b>	-	-	-	-	-	-	-
<b>Case Management FTE</b>	1.0	1.0	1.0	1.0	1.0	1.0	1.0
<b>Case Manager On-Site?</b>	No	No	No	No	No	No	No
<b>Permanent Housing Subsidy?</b>	Yes	Yes	Yes	Yes	Yes	Yes	Yes
<b>Source(s) of subsidy</b>							
<b>Duration of subsid(ies)</b>	2 yrs	2 yrs	2yrs	2yrs	2yrs	2yrs	2yrs

**Multnomah County (p. 1)**

	<b>Arbor Glen</b>	<b>Clara Vista</b>	<b>Rose CDC Scattered Site</b>	<b>Kateri Park</b>	<b>Cambridge Court</b>	<b>Interstate Crossing</b>	<b>Alpha Apartments</b>
<b>B2H Timeline (Pre-Pilot, Pilot, Year 1)</b>	Pre-Pilot/ Pilot	Pre-Pilot	Pre-Pilot	Pre-Pilot	Pre-Pilot	Pre-Pilot	Pre-Pilot
<b>Service Provider</b>	Human Solutions	Portland Impact	Portland Impact	Portland Impact	Central City Concern	Central City Concern	Central City Concern
<b>Housing Provider</b>	Human Solutions	Hacienda CDC	Rose CDC	Caritas	Central City Concern	Central City Concern	Central City Concern
<b>Property Management</b>	Cascade Property Mgmt	Cascade Property Mgmt	Cascade Property Mgmt	Cascade Property Mgmt	Central City Concern	Central City Concern	Central City Concern
<b># of B2H Units?</b>	20	8	5	2	0	0	5
<b>Total Units?</b>	97				20	12	22
<b>Amenities?</b>	Yes	Yes	-	-	Yes	Yes	Yes
<b>Resident Services?</b>	Yes	Yes	No	Yes	Yes	Yes	Yes
<b>Core</b>	Yes	Yes	-	Yes	Yes	Yes	Yes
<b>Youth</b>	Yes	-	-	-	-	-	-
<b>Asset Building</b>	No	-	-	-	-	-	-
<b>Case Management FTE</b>	1.0	1.0	1.0	1.0	1.0	1.0	1.0
<b>Case Manager On-Site?</b>	Yes	No	No	No	No	No	No
<b>Permanent Housing Subsidy?</b>	Yes	Yes	Yes	Yes	No	No	No
<b>Source(s) of subsidy</b>	Project Based Section 8	Project Based Section 8	Project Based Section 8	Project Based Section 8	Project Based Section 8	Project Based Section 8	FAN Rent Subsidy matrix
<b>Duration of subsid(ies)</b>	Permanent	Permanent	Permanent	Permanent	2+ years	2+ years	2+ years



<b>Washington County</b>					
	<b>Fircrest Manor</b>	<b>Aloha Park</b>	<b>Merlo Station</b>	<b>Greenburg Oaks</b>	<b>Spencer House</b>
<b>B2H Timeline (Pre-Pilot, Pilot, Year 1)</b>	Pilot/ Year 1	Year 1	Year 1	Pilot/ Year 1	Pilot
<b>Service Provider</b>	Community Action	Community Action	Community Action	Community Action	Community Action
<b>Housing Provider</b>	Tualatin Valley Housing Partners	Tualatin Valley Housing Partners	Tualatin Valley Housing Partners	Community Partners for Affordable Housing	Tualatin Valley Housing Partners
<b>Property Management</b>	TVHP	TVHP	TVHP	Income Property Mgmt	TVHP
<b># of B2H Units?</b>	8	4	1	8	6
<b>Total Units?</b>	59	59	128	84	48
<b>Amenities?</b>	Yes	Yes	Yes	Yes	Yes
<b>Resident Services?</b>	-	-	-	-	-
<b>Core</b>	-	-	-	-	-
<b>Youth</b>	-	-	-	-	-
<b>Asset Building</b>	-	-	-	-	-
<b>Case Management FTE</b>	1.0	1.0	1.0	1.0	1.0
<b>Case Manager On-Site?</b>	Yes	No	Yes	-	-
<b>Permanent Housing Subsidy?</b>			Yes		Yes
<b>Source(s) of subsidy</b>	Tenant based Shelter + Care, B2H Rent Subsidy	B2H Rent Subsidy	Tenant Based Shelter Plus Care	Tenant Based Section 8, B2H Rent Subsidy (Legacy Funds)	Project Based Section 8
<b>Duration of subsid(ies)</b>					